

For Research Use Only

EXT2 Polyclonal antibody

Catalog Number: 11348-1-AP

1 Publications



Basic Information

Catalog Number:

11348-1-AP

Size:

150ul, Concentration: 450 ug/ml by Nanodrop;

Source:

Rabbit

Isotype:

IgG

Immunogen Catalog Number:

AG1748

GenBank Accession Number:

BC010058

GeneID (NCBI):

2132

UNIPROT ID:

Q93063

Full Name:

exostosin (multiple) 2

Calculated MW:

718 aa, 82 kDa

Observed MW:

70-82 kDa

Purification Method:

Antigen affinity purification

Recommended Dilutions:

WB 1:500-1:3000

IHC 1:20-1:200

IF/ICC 1:200-1:800

Applications

Tested Applications:

WB, IHC, IF/ICC, ELISA

Cited Applications:

WB

Species Specificity:

human, mouse, rat

Cited Species:

human

Note-IHC: suggested antigen retrieval with TE buffer pH 9.0; (*) Alternatively, antigen retrieval may be performed with citrate buffer pH 6.0

Positive Controls:

WB : Jurkat cells, NIH/3T3 cells, U-937 cells, C6 cells

IHC : human colon cancer tissue,

IF/ICC : Jurkat cells,

Background Information

Exostosin-2 (EXT2) is type II transmembrane glycosyltransferase forming with EXT1 the heterodimeric heparan sulfate polymerase which catalyzes the elongation of the heparan sulfate glycan backbone (PMID: 22660413, 36402845, 36593275).

Notable Publications

Author	Pubmed ID	Journal	Application
Valeria De Pasquale	36696678	J Med Chem	WB

Storage

Storage:

Store at -20°C. Stable for one year after shipment.

Storage Buffer:

PBS with 0.02% sodium azide and 50% glycerol pH 7.3.

Aliquoting is unnecessary for -20°C storage

*** 20ul sizes contain 0.1% BSA

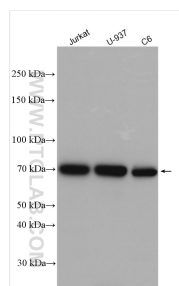
For technical support and original validation data for this product please contact:

T: 1 (888) 4PTGLAB (1-888-478-4522) (toll free in USA), or 1(312) 455-8498 (outside USA)

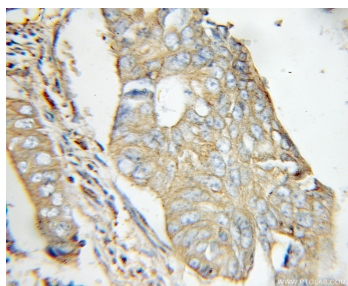
E: proteintech@ptglab.com
W: ptglab.com

This product is exclusively available under Proteintech Group brand and is not available to purchase from any other manufacturer.

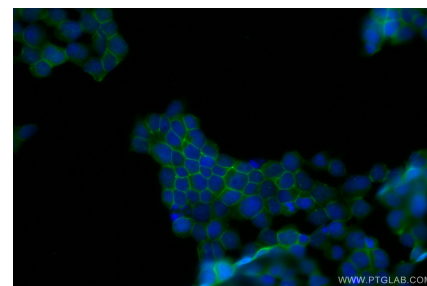
Selected Validation Data



Various lysates were subjected to SDS PAGE followed by western blot with 11348-1-AP (EXT2 antibody) at dilution of 1:1500 incubated at room temperature for 1.5 hours.



Immunohistochemical analysis of paraffin-embedded human colon cancer using 11348-1-AP (EXT2 antibody) at dilution of 1:50 (under 10x lens).



Immunofluorescent analysis of (4% PFA) fixed Jurkat cells using EXT2 antibody (11348-1-AP) at dilution of 1:400 and CoraLite®488-Conjugated AffiniPure Goat Anti-Rabbit IgG(H+L) (SA00013-2).