

For Research Use Only

# SRCRB4D Polyclonal antibody, PBS Only

Catalog Number:11350-1-PBS



## Basic Information

**Catalog Number:**

11350-1-PBS

**Size:**

100ug , Concentration: 1 mg/ml by Nanodrop;

**Source:**

Rabbit

**Isotype:**

IgG

**Immunogen Catalog Number:**

AG1884

**GenBank Accession Number:**

BC015651

**GeneID (NCBI):**

136853

**UNIPROT ID:**

Q8WTU2

**Full Name:**

scavenger receptor cysteine rich domain containing, group B (4 domains)

**Calculated MW:**

61 kDa

**Observed MW:**

70 kDa

**Purification Method:**

Antigen affinity purification

## Applications

**Tested Applications:**

WB, Indirect ELISA

**Species Specificity:**

human, mouse, rat

## Background Information

SRCRB4D (also known as SSC4D or S4D-SRCRB) is a soluble, secreted pattern-recognition receptor belonging to the scavenger receptor cysteine-rich (SRCR) superfamily, characterized by four group B SRCR domains. It is broadly expressed in epithelial cells of the kidney, placenta, liver, intestine, and lung, and functions as an innate immune sensor capable of binding diverse bacteria and protozoan parasites, thereby enhancing phagocytosis by monocytes.

## Storage

**Storage:**

Store at -80°C.

**Storage Buffer:**

PBS only, pH7.3

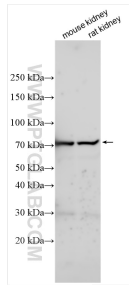
For technical support and original validation data for this product please contact:

T: 1 (888) 4PTGLAB (1-888-478-4522) (toll free in USA), or 1(312) 455-8498 (outside USA)

E: [proteintech@ptglab.com](mailto:proteintech@ptglab.com)  
W: [ptglab.com](http://ptglab.com)

**This product is exclusively available under Proteintech Group brand and is not available to purchase from any other manufacturer.**

## Selected Validation Data



Various lysates were subjected to SDS PAGE followed by western blot with 11350-1-AP (SRCRB4D antibody) at dilution of 1:3000 incubated at room temperature for 1.5 hours. This data was developed using the same antibody clone with 11350-1-PBS in a different storage buffer formulation.