

For Research Use Only

MYDGF/C19orf10 Polyclonal antibody

Catalog Number: 11353-1-AP

Featured Product

10 Publications



Basic Information

Catalog Number:

11353-1-AP

Size:

150ul, Concentration: 350 ug/ml by Nanodrop;

Source:

Rabbit

Isotype:

IgG

Immunogen Catalog Number:

AG1900

GenBank Accession Number:

BC010129

GeneID (NCBI):

56005

UNIPROT ID:

Q969H8

Full Name:

chromosome 19 open reading frame 10

Calculated MW:

173 aa, 19 kDa

Observed MW:

15-19 kDa

Purification Method:

Antigen affinity purification

Recommended Dilutions:

WB 1:500-1:2000

IHC 1:50-1:500

IF/ICC 1:200-1:800

Applications

Tested Applications:

WB, IHC, IF/ICC, ELISA

Cited Applications:

WB, IHC, IF

Species Specificity:

human, mouse, rat

Cited Species:

human, mouse, rat

Note-IHC: suggested antigen retrieval with TE buffer pH 9.0; (*) Alternatively, antigen retrieval may be performed with citrate buffer pH 6.0

Positive Controls:

WB: DU 145 cells, HeLa cells, mouse colon tissue, Jurkat cells

IHC: human liver cancer tissue,

IF/ICC: HepG2 cells,

Background Information

Myeloid-derived growth factor (MYDGF), also named as chromosome 19 open reading frame 10 (C19orf10), is an FLS-derived protein that is secreted into the synovial fluid. MYDGF as a paracrine-acting protein secreted from monocytes/macrophages that improves tissue repair and heart function after myocardial infarction. MYDGF has been reported to regulate neutrophil motility in interstitial tissue damage (PMID: 34047769).

Notable Publications

| Author | Pubmed ID | Journal | Application |
|-------------|-----------|-------------|-------------|
| Yanxin Lu | 34552877 | Front Oncol | WB, IHC |
| Ping Zhan | 35623505 | Kidney Int | WB, IHC, IF |
| Biyang Meng | 34020949 | Sci Adv | WB, IF |

Storage

Storage:

Store at -20°C. Stable for one year after shipment.

Storage Buffer:

PBS with 0.02% sodium azide and 50% glycerol pH 7.3.

Aliquoting is unnecessary for -20°C storage

*** 20ul sizes contain 0.1% BSA

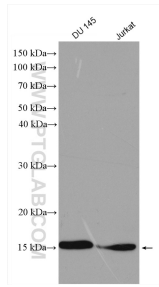
For technical support and original validation data for this product please contact:

T: 1 (888) 4PTGLAB (1-888-478-4522) (toll free in USA), or 1(312) 455-8498 (outside USA)

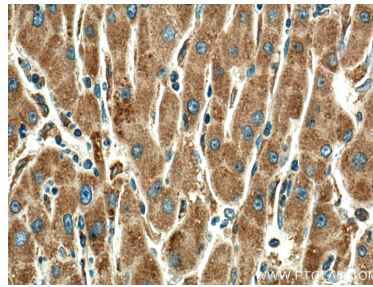
E: proteintech@ptglab.com
W: ptglab.com

This product is exclusively available under Proteintech Group brand and is not available to purchase from any other manufacturer.

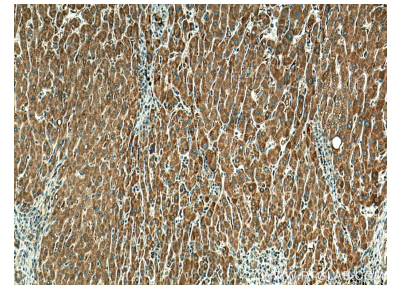
Selected Validation Data



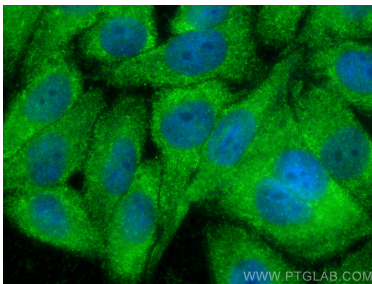
various cells were subjected to SDS PAGE followed by western blot with 11353-1-AP (MYDGF/C19orf10F antibody) at dilution of 1:1000 incubated at room temperature for 1.5 hours.



Immunohistochemical analysis of paraffin-embedded human liver cancer tissue slide using 11353-1-AP (MYDGF antibody) at dilution of 1:200 (under 40x lens). Heat mediated antigen retrieval with Tris-EDTA buffer (pH 9.0).



Immunohistochemical analysis of paraffin-embedded human liver cancer tissue slide using 11353-1-AP (MYDGF antibody) at dilution of 1:200 (under 10x lens). Heat mediated antigen retrieval with Tris-EDTA buffer (pH 9.0).



Immunofluorescent analysis of (-20°C Ethanol) fixed HepG2 cells using MYDGF/C19orf10 antibody (11353-1-AP) at dilution of 1:400 and CoraLite®488-Conjugated Goat Anti-Rabbit IgG(H+L) (SA00013-2).