

For Research Use Only

# ARHGEF1 Polyclonal antibody

Catalog Number: 11363-1-AP

4 Publications



## Basic Information

### Catalog Number:

11363-1-AP

### Size:

150ul, Concentration: 800 µg/ml by Nanodrop and 387 µg/ml by Bradford method using BSA as the standard;

### Source:

Rabbit

### Isotype:

IgG

### Immunogen Catalog Number:

AG1905

### GenBank Accession Number:

BC011726

### GeneID (NCBI):

9138

### Full Name:

Rho guanine nucleotide exchange factor (GEF) 1

### Calculated MW:

912 aa, 102 kDa

### Observed MW:

102-110 kDa

### Purification Method:

Antigen affinity purification

### Recommended Dilutions:

WB 1:500-1:2000

IP 0.5-4.0 µg for IP and 1:500-1:2000 for WB

IHC 1:20-1:200

IF 1:50-1:500

## Applications

### Tested Applications:

IF, IHC, IP, WB, ELISA

### Cited Applications:

CoIP, WB

### Species Specificity:

human, mouse

### Cited Species:

human, mouse

**Note-IHC: suggested antigen retrieval with TE buffer pH 9.0; (\*) Alternatively, antigen retrieval may be performed with citrate buffer pH 6.0**

### Positive Controls:

**WB**: HEK-293 cells, HeLa cells, HepG2 cells, human brain tissue, human spleen tissue, Jurkat cells, K-562 cells, mouse spleen tissue

**IP**: HEK-293 cells,

**IHC**: human colon tissue,

**IF**: HeLa cells, A549 cells

## Background Information

### Notable Publications

Author	Pubmed ID	Journal	Application
P V Ryder	23676666	Mol Biol Cell	WB
Silvana Konermann	25494202	Nature	WB
Yaping Zhang	37587112	Nat Commun	CoIP, WB

## Storage

### Storage:

Store at -20°C. Stable for one year after shipment.

### Storage Buffer:

PBS with 0.02% sodium azide and 50% glycerol pH 7.3.

Aliquoting is unnecessary for -20°C storage

\*\*\* 20ul sizes contain 0.1% BSA

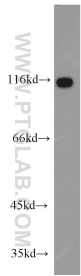
For technical support and original validation data for this product please contact:

T: 1 (888) 4PTGLAB (1-888-478-4522) (toll free in USA), or 1(312) 455-8498 (outside USA)

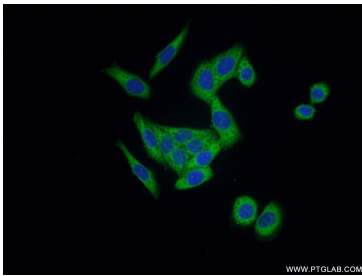
E: [proteintech@ptglab.com](mailto:proteintech@ptglab.com)  
W: [ptglab.com](http://ptglab.com)

This product is exclusively available under Proteintech Group brand and is not available to purchase from any other manufacturer.

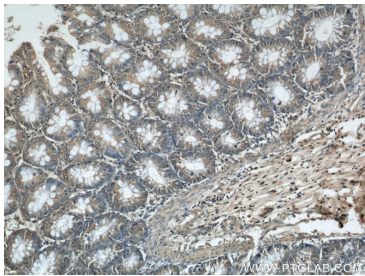
Selected Validation Data



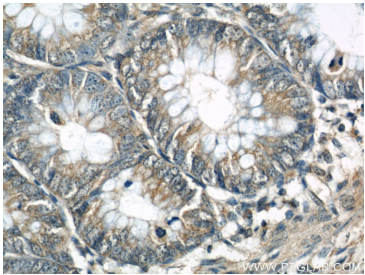
HEK-293 cells were subjected to SDS PAGE followed by western blot with 11363-1-AP (ARHGEF1 antibody) at dilution of 1:1000 incubated at room temperature for 1.5 hours.



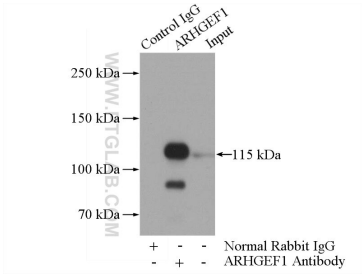
Immunofluorescent analysis of HeLa cells using 11363-1-AP (ARHGEF1 antibody) at dilution of 1:50 and Alexa Fluor 488-conjugated AffiniPure Goat Anti-Rabbit IgG(H+L).



Immunohistochemical analysis of paraffin-embedded human colon using 11363-1-AP (ARHGEF1 antibody) at dilution of 1:50 (under 10x lens).



Immunohistochemical analysis of paraffin-embedded human colon using 11363-1-AP (ARHGEF1 antibody) at dilution of 1:50 (under 40x lens).



IP Result of anti-ARHGEF1 (IP:11363-1-AP, 4ug; Detection:11363-1-AP 1:1000) with HEK-293 cells lysate 2800ug.