

UBE2D1/2/3/4 Polyclonal antibody

Catalog Number: 11373-1-AP

Basic Information

Catalog Number: 11373-1-AP	GenBank Accession Number: BC015997	Purification Method: Antigen affinity purification
Size: 150ul, Concentration: 550 ug/ml by Nanodrop;	GeneID (NCBI): 7321	Recommended Dilutions: WB 1:2000-1:12000
Source: Rabbit	UNIPROT ID: P51668	IP 0.5-4.0 ug for 1.0-3.0 mg of total protein lysate
Isotype: IgG	Full Name: ubiquitin-conjugating enzyme E2D 1 (UBC4/5 homolog, yeast)	IHC 1:20-1:200
Immunogen Catalog Number: AG1932	Calculated MW: 17 kDa	
	Observed MW: 17 kDa	

Applications

Tested Applications: WB, IP, IHC, ELISA	Positive Controls:
Species Specificity: human, mouse, rat	WB: HeLa cells, NIH/3T3 cells, Jurkat cells, mpuse heart tissue, mouse thymus tissue
Note-IHC: suggested antigen retrieval with TE buffer pH 9.0; (*) Alternatively, antigen retrieval may be performed with citrate buffer pH 6.0	IP: Jurkat cells,
	IHC: human prostate cancer tissue,

Background Information

Ubiquitination is a post-translational modification pathway or is part of the specific protein-degradation pathway by the 26S proteasome. Ubiquitination of a target protein involves multistep enzymatic reaction catalyzed by a cascade of enzymes including Ub-activating enzymes (E1s), Ub-conjugating enzymes (E2s) and Ub ligases (E3s) (PMID: 23542885). UBE2D family, which has 4 members named as UBE2D1/2/3/4, is an E2 ubiquitin-conjugating enzyme family in the ubiquitin-proteasome system. This antibody can recognize all the four members of UBE2D due to the high homology.

Storage

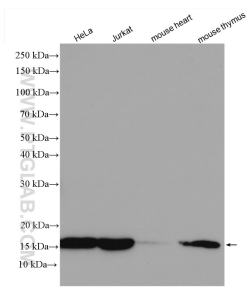
Storage:
Store at -20°C. Stable for one year after shipment.
Storage Buffer:
PBS with 0.02% sodium azide and 50% glycerol pH 7.3.
Aliquoting is unnecessary for -20°C storage

*** 20ul sizes contain 0.1% BSA

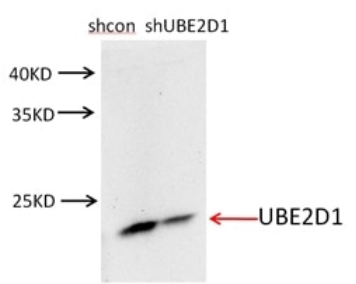
For technical support and original validation data for this product please contact:
T: 1 (888) 4PTGLAB (1-888-478-4522) (toll free in USA), or 1(312) 455-8498 (outside USA)
E: proteintech@ptglab.com
W: ptglab.com

This product is exclusively available under Proteintech Group brand and is not available to purchase from any other manufacturer.

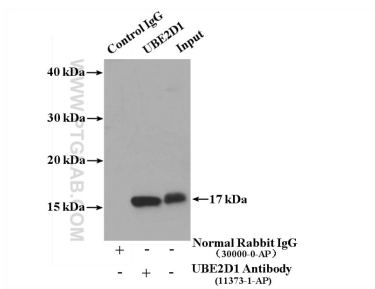
Selected Validation Data



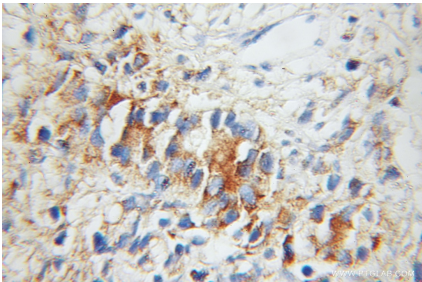
Various lysates were subjected to SDS PAGE followed by western blot with 11373-1-AP (UBE2D1/2/3/4 antibody) at dilution of 1:6000 incubated at room temperature for 1.5 hours.



NIH/3T3 cells were subjected to SDS PAGE followed by western blot with 11373-1-AP (UBE2D1-Specific antibody) at dilution of 1:500. .



IP result of anti-UBE2D1/2/3/4 (IP:11373-1-AP, 4ug; Detection:11373-1-AP 1:300) with Jurkat cells lysate 2600 ug.



Immunohistochemical analysis of paraffin-embedded human prostate cancer using 11373-1-AP (UBE2D1-Specific antibody) at dilution of 1:50 (under 10x lens).