

For Research Use Only

ARHGEF5 Polyclonal antibody

Catalog Number: 11379-1-AP **3 Publications**



Basic Information

Catalog Number: 11379-1-AP	GenBank Accession Number: BC010046	Purification Method: Antigen affinity purification
Size: 150ul, Concentration: 500 µg/ml by Nanodrop and 300 µg/ml by Bradford method using BSA as the standard;	GeneID (NCBI): 7984	Recommended Dilutions: WB 1:1000-1:4000 IP 0.5-4.0 ug for IP and 1:500-1:1000 for WB
Source: Rabbit	Full Name: Rho guanine nucleotide exchange factor (GEF) 5	IHC 1:50-1:500 IF 1:50-1:500
Isotype: IgG	Calculated MW: 177 kDa	
Immunogen Catalog Number: AG1892	Observed MW: 60 kDa	

Applications

Tested Applications: IF, IHC, IP, WB, ELISA	Positive Controls: WB: MCF7 cells, HEK-293 cells, HeLa cells, human kidney tissue, human liver tissue, mouse kidney tissue, mouse liver tissue, rat kidney tissue
Cited Applications: IF, IHC, WB	IP: mouse kidney tissue,
Species Specificity: human, mouse, rat	IHC: human lung cancer tissue,
Cited Species: human, mouse	IF: HeLa cells,

Note-IHC: suggested antigen retrieval with TE buffer pH 9.0; (*) Alternatively, antigen retrieval may be performed with citrate buffer pH 6.0

Background Information

Notable Publications

Author	Pubmed ID	Journal	Application
Hye-Kyung Lee	26358398	Cell Biochem Funct	WB
Hye-Kyung Lee	25911094	J Biol Chem	WB, IF
He Ping P	24126923	Oncol Rep	IHC

Storage

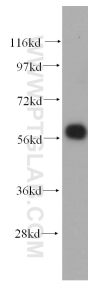
Storage:
Store at -20°C. Stable for one year after shipment.
Storage Buffer:
PBS with 0.02% sodium azide and 50% glycerol pH 7.3.
Aliquoting is unnecessary for -20°C storage

*** 20ul sizes contain 0.1% BSA

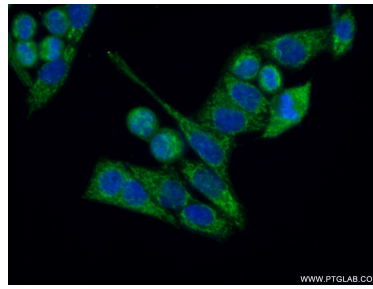
For technical support and original validation data for this product please contact:
T: 1 (888) 4PTGLAB (1-888-478-4522) (toll free in USA), or 1(312) 455-8498 (outside USA)
E: proteintech@ptglab.com
W: ptglab.com

This product is exclusively available under Proteintech Group brand and is not available to purchase from any other manufacturer.

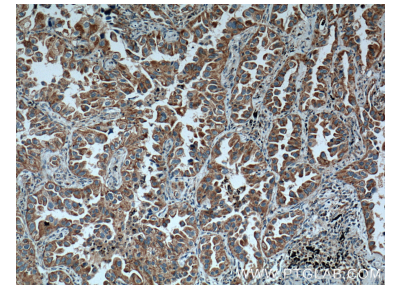
Selected Validation Data



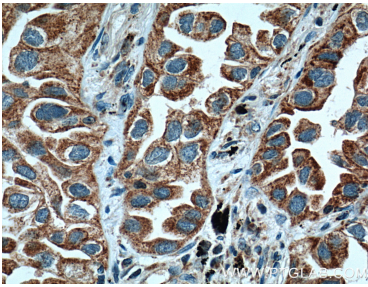
MCF7 cells were subjected to SDS PAGE followed by western blot with 11379-1-AP (ARHGEF5 antibody) at dilution of 1:500 incubated at room temperature for 1.5 hours.



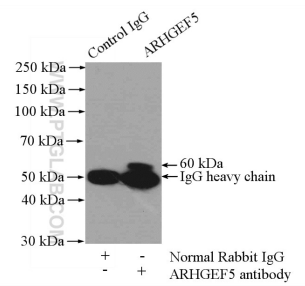
Immunofluorescent analysis of (4% PFA) fixed HeLa cells using 11379-1-AP (ARHGEF5 antibody) at dilution of 1:50 and Alexa Fluor 488-conjugated AffiniPure Goat Anti-Rabbit IgG(H+L).



Immunohistochemical analysis of paraffin-embedded human lung cancer tissue slide using 11379-1-AP (ARHGEF5 Antibody) at dilution of 1:200 (under 10x lens). Heat mediated antigen retrieval with Tris-EDTA buffer (pH 9.0).



Immunohistochemical analysis of paraffin-embedded human lung cancer tissue slide using 11379-1-AP (ARHGEF5 Antibody) at dilution of 1:200 (under 40x lens). Heat mediated antigen retrieval with Tris-EDTA buffer (pH 9.0).



IP Result of anti-ARHGEF5 (IP:11379-1-AP, 4ug; Detection:11379-1-AP 1:500) with mouse kidney tissue lysate 4000ug.