

For Research Use Only

EHD4 Polyclonal antibody

Catalog Number: 11382-2-AP **4 Publications**



Basic Information

Catalog Number: 11382-2-AP	GenBank Accession Number: BC006287	Purification Method: Antigen affinity purification
Size: 150ul , Concentration: 650 µg/ml by Nanodrop;	GeneID (NCBI): 30844	Recommended Dilutions: WB 1:1000-1:8000 IF 1:10-1:100
Source: Rabbit	Full Name: EH-domain containing 4	
IsoType: IgG	Calculated MW: 541 aa, 61 kDa	
Immunogen Catalog Number: AG1942	Observed MW: 61 kDa	

Applications

Tested Applications: IF, WB, ELISA	Positive Controls: WB : A431 cells, mouse testis tissue, HeLa cells, HEK-293T cells, HepG2 cells, mouse heart tissue, rat heart tissue IF : HepG2 cells,
Cited Applications: IHC, WB	
Species Specificity: human, mouse, rat	
Cited Species: human, mouse	

Background Information

H-domain containing 4, also known as EHD4, belongs to the EHD protein family. Northern blot analysis detected expression of 4 mRNA species of approximately 2.0, 2.7, 3.2, and 3.6 kb. All of the transcripts are highly expressed in pancreas, and the 2.7- and 3.6-kb transcripts are highly expressed in heart. Only weak expression is found in other tissues.

Notable Publications

Author	Pubmed ID	Journal	Application
Ivana Yeow	28943089	Curr Biol	WB
Quan Zhou	31707150	EBioMedicine	WB
Lingling Zhang	33964295	Life Sci	WB

Storage

Storage:
Store at -20°C. Stable for one year after shipment.
Storage Buffer:
PBS with 0.02% sodium azide and 50% glycerol pH 7.3.
Aliquoting is unnecessary for -20°C storage

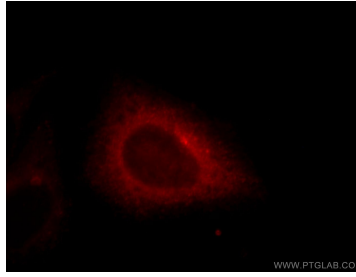
*** 20ul sizes contain 0.1% BSA

For technical support and original validation data for this product please contact:
T: 1 (888) 4PTGLAB (1-888-478-4522) (toll free in USA), or 1(312) 455-8498 (outside USA)
E: proteintech@ptglab.com
W: ptglab.com

This product is exclusively available under Proteintech Group brand and is not available to purchase from any other manufacturer.

Selected Validation Data

Various lysates were subjected to SDS PAGE followed by western blot with 11382-2-AP (EHD4 antibody) at dilution of 1:4000 incubated at room temperature for 1.5 hours.



Immunofluorescent analysis of HepG2 cells, using EHD4 antibody 11382-2-AP at 1:25 dilution and Rhodamine-labeled goat anti-rabbit IgG (red).