

For Research Use Only

SPRY2 Polyclonal antibody

Catalog Number: 11383-1-AP

Featured Product

6 Publications



Basic Information

| | | |
|---|---|---|
| Catalog Number: 11383-1-AP | GenBank Accession Number: BC015745 | Purification Method: Antigen affinity purification |
| Size: 150ul, Concentration: 850 µg/ml by Nanodrop and 433 µg/ml by Bradford method using BSA as the standard; | GeneID (NCBI): 10253 | Recommended Dilutions: WB 1:500-1:1000 IHC 1:50-1:500 IF 1:10-1:100 |
| Source: Rabbit | Full Name: sprouty homolog 2 (Drosophila) | |
| Isotype: IgG | Calculated MW: 35 kDa | |
| Immunogen Catalog Number: AG1918 | Observed MW: 35-40 kDa, 60-65 kDa | |

Applications

Tested Applications:

IF, IHC, WB, ELISA

Cited Applications:

IF, IHC, WB

Species Specificity:

human, mouse, rat

Cited Species:

human, mouse

Note-IHC: suggested antigen retrieval with TE buffer pH 9.0; (*) Alternatively, antigen retrieval may be performed with citrate buffer pH 6.0

Positive Controls:

WB : SW 1990 cells, Jurkat cells, A375 cells, Neuro-2a cells

IHC : human pancreas cancer tissue,

IF : A375 cells,

Background Information

Sprouty (SPRY) genes encode intracellular inhibitors of receptor tyrosine kinase (RTK) signaling pathways, including those triggered by fibroblast growth factors (Fgfs). In addition to its well-reported function as an inhibitor of the RAS/RAF/MEK signalling cascade, SPRY2 exerts its inhibitory role in the PI3K/AKT signalling pathway through PTEN, and inhibits ERK/MAPK activity via EGFR trafficking. SPRY2 was detected 60-65 kDa (PMID:29291435).

Notable Publications

| Author | Pubmed ID | Journal | Application |
|-------------------|-----------|------------------------|-------------|
| Takaharu Taketomi | 28921936 | Cell Biol Int | WB |
| Guangying Yang | 35682694 | Int J Mol Sci | WB |
| Nai-Jie Fu | 35307375 | Toxicol Appl Pharmacol | WB |

Storage

Storage:

Store at -20°C. Stable for one year after shipment.

Storage Buffer:

PBS with 0.02% sodium azide and 50% glycerol pH 7.3.

Aliquoting is unnecessary for -20°C storage

*** 20ul sizes contain 0.1% BSA

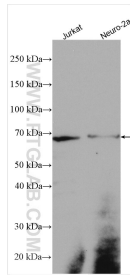
For technical support and original validation data for this product please contact:

T: 1 (888) 4PTGLAB (1-888-478-4522) (toll free in USA), or 1(312) 455-8498 (outside USA)

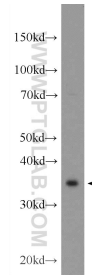
E: proteintech@ptglab.com
W: ptglab.com

This product is exclusively available under Proteintech Group brand and is not available to purchase from any other manufacturer.

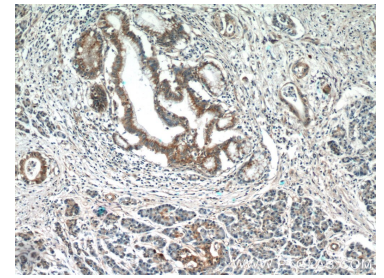
Selected Validation Data



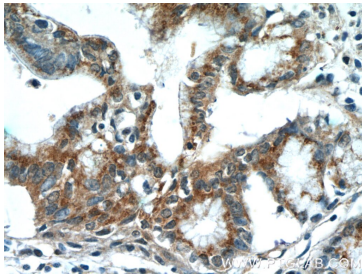
Various lysates were subjected to SDS PAGE followed by western blot with 11383-1-AP (SPRY2 antibody) at dilution of 1:800 incubated at room temperature for 1.5 hours.



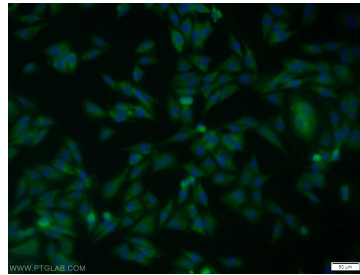
SW 1990 cells were subjected to SDS PAGE followed by western blot with 11383-1-AP (SPRY2 Antibody) at dilution of 1:600 incubated at room temperature for 1.5 hours.



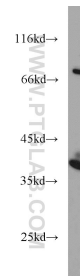
Immunohistochemical analysis of paraffin-embedded human pancreas cancer tissue slide using 11383-1-AP (SPRY2 Antibody) at dilution of 1:50 (under 10x lens).



Immunohistochemical analysis of paraffin-embedded human pancreas cancer tissue slide using 11383-1-AP (SPRY2 Antibody) at dilution of 1:50 (under 40x lens).



Immunofluorescent analysis of A375 cells using 11383-1-AP (SPRY2 antibody) at dilution of 1:25 and Alexa Fluor 488-conjugated AffiniPure Goat Anti-Rabbit IgG(H+L).



A375 cells were subjected to SDS PAGE followed by western blot with 11383-1-AP (SPRY2 antibody) at dilution of 1:500 incubated at room temperature for 1.5 hours.