

For Research Use Only

# PWP2 Polyclonal antibody

Catalog Number: 11390-1-AP

1 Publications



## Basic Information

### Catalog Number:

11390-1-AP

### Size:

150ul, Concentration: 300 ug/ml by Nanodrop and 300 ug/ml by Bradford method using BSA as the standard;

### Source:

Rabbit

### Isotype:

IgG

### Immunogen Catalog Number:

AG1936

### GenBank Accession Number:

BC014988

### GeneID (NCBI):

5822

### UNIPROT ID:

Q15269

### Full Name:

PWP2 periodic tryptophan protein homolog (yeast)

### Calculated MW:

919 aa, 102 kDa

### Observed MW:

102 kDa

### Purification Method:

Antigen affinity purification

### Recommended Dilutions:

WB 1:500-1:1000

IP 0.5-4.0 ug for 1.0-3.0 mg of total protein lysate

IF/ICC 1:10-1:100

## Applications

### Tested Applications:

WB, IF/ICC, IP, ELISA

### Cited Applications:

WB

### Species Specificity:

human

### Cited Species:

human

### Positive Controls:

WB : HeLa cells,

IP : HeLa cells,

IF/ICC : HepG2 cells,

## Background Information

The function of PWP2 remains largely unknown. Catalog#11390-1-AP is a rabbit polyclonal antibody raised against the full-length of human PWP2. The MW of this protein is 102 kDa, and this antibody specially recognises the 102 kDa protein.

## Notable Publications

Author	Pubmed ID	Journal	Application
Wenjie Zhou	33732644	Front Oncol	WB

## Storage

### Storage:

Store at -20°C. Stable for one year after shipment.

### Storage Buffer:

PBS with 0.02% sodium azide and 50% glycerol pH 7.3.

Aliquoting is unnecessary for -20°C storage

\*\*\* 20ul sizes contain 0.1% BSA

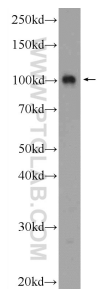
For technical support and original validation data for this product please contact:

T: 1 (888) 4PTGLAB (1-888-478-4522) (toll free in USA), or 1(312) 455-8498 (outside USA)

E: [proteintech@ptglab.com](mailto:proteintech@ptglab.com)  
W: [ptglab.com](http://ptglab.com)

This product is exclusively available under Proteintech Group brand and is not available to purchase from any other manufacturer.

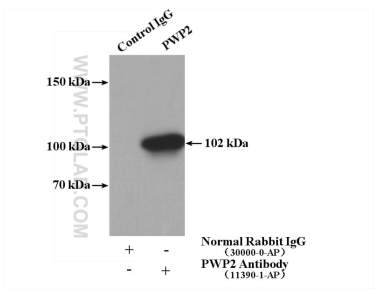
Selected Validation Data



HeLa cells were subjected to SDS PAGE followed by western blot with 11390-1-AP (PWP2 Antibody) at dilution of 1:600 incubated at room temperature for 1.5 hours.



Immunofluorescent analysis of HepG2 cells, using PWP2 antibody 11390-1-AP at 1:25 dilution and Rhodamine-labeled goat anti-rabbit IgG (red). Blue pseudocolor = DAPI (fluorescent DNA dye).



IP result of anti-PWP2 (IP:11390-1-AP, 4ug; Detection:11390-1-AP 1:600) with HeLa cells lysate 2400ug.