

For Research Use Only

# GKAP1 Polyclonal antibody

Catalog Number: 11395-1-AP

Featured Product

1 Publications



## Basic Information

### Catalog Number:

11395-1-AP

### Size:

150ul, Concentration: 1000 ug/ml by Nanodrop and 453 ug/ml by Bradford method using BSA as the standard;

### Source:

Rabbit

### Isotype:

IgG

### Immunogen Catalog Number:

AG1914

### GenBank Accession Number:

BC014476

### GeneID (NCBI):

80318

### UNIPROT ID:

Q5VSY0

### Full Name:

G kinase anchoring protein 1

### Calculated MW:

366 aa, 42 kDa

### Observed MW:

45-50 kDa

### Purification Method:

Antigen affinity purification

### Recommended Dilutions:

WB 1:500-1:1000

IHC 1:20-1:200

## Applications

### Tested Applications:

WB, IHC, ELISA

### Cited Applications:

WB, IF, IHC

### Species Specificity:

human, mouse, rat

### Cited Species:

human, mouse

**Note-IHC: suggested antigen retrieval with TE buffer pH 9.0; (\*) Alternatively, antigen retrieval may be performed with citrate buffer pH 6.0**

### Positive Controls:

WB : HEK-293 cells, mouse testis tissue

IHC : human cervical cancer tissue, human testis tissue

## Background Information

GKAP1, or GKAP42, is a novel male germ cell-specific 42-kDa protein isolated by Yuasa K et al. GKAP42 mRNA is specifically expressed in testis, where it is restricted to the spermatocytes and early round spermatids.

## Notable Publications

Author	Pubmed ID	Journal	Application
Hanshu Wang	31318116	Mol Reprod Dev	WB,IF,IHC

## Storage

### Storage:

Store at -20°C. Stable for one year after shipment.

### Storage Buffer:

PBS with 0.02% sodium azide and 50% glycerol pH 7.3.

Aliquoting is unnecessary for -20°C storage

\*\*\* 20ul sizes contain 0.1% BSA

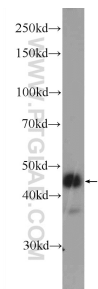
For technical support and original validation data for this product please contact:

T: 1 (888) 4PTGLAB (1-888-478-4522) (toll free in USA), or 1(312) 455-8498 (outside USA)

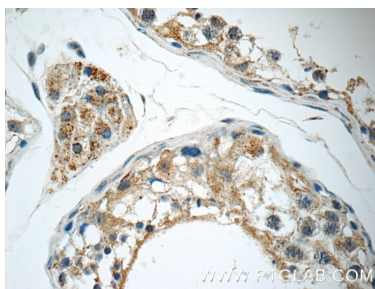
E: [proteintech@ptglab.com](mailto:proteintech@ptglab.com)  
W: [ptglab.com](http://ptglab.com)

This product is exclusively available under Proteintech Group brand and is not available to purchase from any other manufacturer.

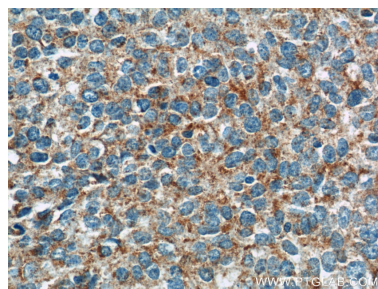
## Selected Validation Data



HEK-293 cells were subjected to SDS PAGE followed by western blot with 11395-1-AP (GKAP1 Antibody) at dilution of 1:600 incubated at 4 degree celsius over night.



Immunohistochemical analysis of paraffin-embedded human testis tissue slide using 11395-1-AP (GKAP1 Antibody) at dilution of 1:50 (under 40x lens).



Immunohistochemical analysis of paraffin-embedded human cervical cancer tissue slide using 11395-1-AP (GKAP1 Antibody) at dilution of 1:50 (under 40x lens).