

For Research Use Only

# POF1B Polyclonal antibody

Catalog Number: 11398-1-AP



## Basic Information

<b>Catalog Number:</b> 11398-1-AP	<b>GenBank Accession Number:</b> BC017500	<b>Purification Method:</b> Antigen affinity purification
<b>Size:</b> 150ul , Concentration: 300 µg/ml by Nanodrop and 193 µg/ml by Bradford method using BSA as the standard;	<b>GeneID (NCBI):</b> 79983	<b>Recommended Dilutions:</b> WB 1:1000-1:8000 IF 1:50-1:500
<b>Source:</b> Rabbit	<b>Full Name:</b> premature ovarian failure, 1B	
<b>Isotype:</b> IgG	<b>Calculated MW:</b> 595 aa, 69 kDa	
<b>Immunogen Catalog Number:</b> AG1945	<b>Observed MW:</b> 69 kDa	

## Applications

<b>Tested Applications:</b> IF, WB, ELISA	<b>Positive Controls:</b>
<b>Species Specificity:</b> human, mouse, rat	<b>WB :</b> A549 cells, mouse colon tissue <b>IF :</b> MCF-7 cells,

## Background Information

POF1B plays a key role in the organization of epithelial monolayers by regulating the actin cytoskeleton. POF1B is a candidate gene for premature ovarian failure (POF); it is mainly expressed in polarised epithelial tissues.

## Storage

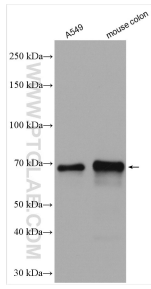
**Storage:**  
Store at -20°C. Stable for one year after shipment.  
**Storage Buffer:**  
PBS with 0.02% sodium azide and 50% glycerol pH 7.3.  
Aliquoting is unnecessary for -20°C storage

**\*\*\* 20ul sizes contain 0.1% BSA**

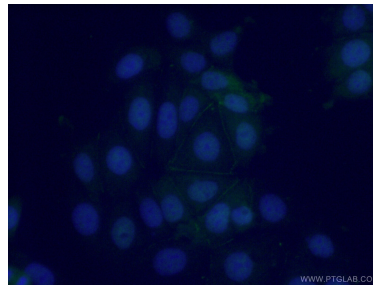
For technical support and original validation data for this product please contact:  
T: 1 (888) 4PTGLAB (1-888-478-4522) (toll free in USA), or 1(312) 455-8498 (outside USA)  
E: [proteintech@ptglab.com](mailto:proteintech@ptglab.com)  
W: [ptglab.com](http://ptglab.com)

This product is exclusively available under Proteintech Group brand and is not available to purchase from any other manufacturer.

## Selected Validation Data



Various lysates were subjected to SDS PAGE followed by western blot with 11398-1-AP (POF1B antibody) at dilution of 1:4000 incubated at room temperature for 1.5 hours.



Immunofluorescent analysis of (-20°C Ethanol) fixed MCF-7 cells using 11398-1-AP (POF1B antibody) at dilution of 1:50 and Alexa Fluor 488-conjugated AffiniPure Goat Anti-Rabbit IgG(H+L).