

For Research Use Only

ASRGL1 Polyclonal antibody

Catalog Number: 11400-1-AP

16 Publications



Basic Information

Catalog Number:

11400-1-AP

Size:

150ul, Concentration: 750 ug/ml by Nanodrop and 367 ug/ml by Bradford method using BSA as the standard;

Source:

Rabbit

Isotype:

IgG

Immunogen Catalog Number:

AG1955

GenBank Accession Number:

BC021295

GeneID (NCBI):

80150

UNIPROT ID:

Q7L266

Full Name:

asparaginase like 1

Calculated MW:

308 aa, 32 kDa

Observed MW:

32-40 kDa, 20-25 kDa, 15-19 kDa

Purification Method:

Antigen affinity purification

Recommended Dilutions:

WB 1:500-1:2000

IP 0.5-4.0 ug for 1.0-3.0 mg of total protein lysate

IHC 1:50-1:500

IF/ICC 1:50-1:500

Applications

Tested Applications:

WB, IHC, IF/ICC, IP, ELISA

Cited Applications:

WB, IHC, IF

Species Specificity:

human, mouse, rat

Cited Species:

human, mouse, rat, cat

Positive Controls:

WB : HeLa cells,

IP : HeLa cells,

IHC : human gliomas tissue,

IF/ICC : HeLa cells,

Note-IHC: suggested antigen retrieval with TE buffer pH 9.0; (*) Alternatively, antigen retrieval may be performed with citrate buffer pH 6.0

Background Information

Asparaginase-like protein 1 (ASRGL1) is also named as ALP, CRASH and belongs to the Ntn-hydrolase family. ASRGL1 has both L-asparaginase and beta-aspartyl peptidase activity. It may be involved in the production of L-aspartate, which can act as an excitatory neurotransmitter in some brain regions. ASRGL1 has 2 isoforms produced by alternative splicing with the MW of 32 kDa and 19 kDa. Two lower molecular weight bands (23 and 15 kDa) can be detected corresponding to the processed α and β subunits (PMID: 27106100).

Notable Publications

Author	Pubmed ID	Journal	Application
Pengfei Xu	36435763	BMC Musculoskelet Disord	WB
Yongkui Wang	33171191	Toxicol Appl Pharmacol	WB,IHC
Daniela R Chavez	34012967	Front Cell Dev Biol	IHC

Storage

Storage:

Store at -20°C. Stable for one year after shipment.

Storage Buffer:

PBS with 0.02% sodium azide and 50% glycerol pH 7.3.

Aliquoting is unnecessary for -20°C storage

*** 20ul sizes contain 0.1% BSA

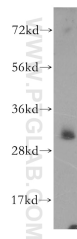
For technical support and original validation data for this product please contact:

T: 1 (888) 4PTGLAB (1-888-478-4522) (toll free in USA), or 1(312) 455-8498 (outside USA)

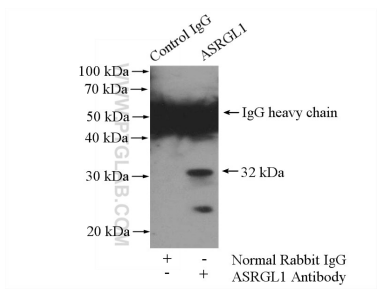
E: proteintech@ptglab.com
W: ptglab.com

This product is exclusively available under Proteintech Group brand and is not available to purchase from any other manufacturer.

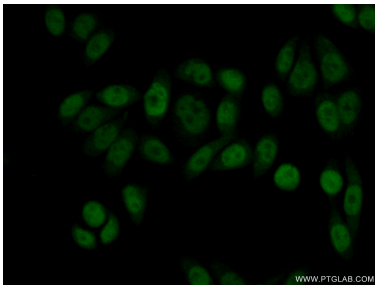
Selected Validation Data



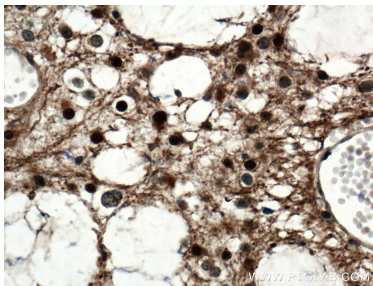
HeLa cells were subjected to SDS PAGE followed by western blot with 11400-1-AP (ASRGL1 antibody) at dilution of 1:500 incubated at room temperature for 1.5 hours.



IP result of anti-ASRGL1 (IP:11400-1-AP, 4ug; Detection:11400-1-AP 1:500) with HeLa cells lysate 3200ug.



Immunofluorescent analysis of (10% Formaldehyde) fixed HeLa cells using 11400-1-AP (ASRGL1 antibody) at dilution of 1:50 and Alexa Fluor 488-conjugated Goat Anti-Rabbit IgG(H+L).



Immunohistochemical analysis of paraffin-embedded human gliomas tissue slide using 11400-1-AP (ASRGL1 antibody) at dilution of 1:200 (under 40x lens. Heat mediated antigen retrieval with Tris-EDTA buffer (pH 9.0).