

For Research Use Only

# EEF1A1 Polyclonal antibody

Catalog Number: 11402-1-AP

Featured Product

29 Publications



## Basic Information

### Catalog Number:

11402-1-AP

### Size:

150ul, Concentration: 500 ug/ml by Nanodrop;

### Source:

Rabbit

### Isotype:

IgG

### Immunogen Catalog Number:

AG1938

### GenBank Accession Number:

BC014224

### GeneID (NCBI):

1915

### UNIPROT ID:

P68104

### Full Name:

eukaryotic translation elongation factor 1 alpha 1

### Calculated MW:

462 aa, 50 kDa

### Observed MW:

50 kDa

### Purification Method:

Antigen affinity purification

### Recommended Dilutions:

WB 1:2000-1:12000

IHC 1:50-1:500

IF/ICC 1:200-1:800

## Applications

### Tested Applications:

WB, IHC, IF/ICC, ELISA

### Cited Applications:

WB, IHC, IF, IP, CoIP, RIP

### Species Specificity:

human, mouse, rat

### Cited Species:

human, mouse, zebrafish

**Note-IHC: suggested antigen retrieval with TE buffer pH 9.0; (\*) Alternatively, antigen retrieval may be performed with citrate buffer pH 6.0**

### Positive Controls:

**WB:** HEK-293 cells, HeLa cells, mouse liver tissue, mouse skeletal muscle tissue, MCF-7 cells, mouse pancreas tissue, mouse ovary tissue, mouse heart tissue, rat brain tissue, human brain tissue, Jurkat cells, SH-SY5Y cells, Neuro-2a cells, C2C12 cells, HepG2 cells, mouse brain tissue

**IHC:** mouse brain tissue, human pancreas cancer tissue

**IF/ICC:** HepG2 cells, HeLa cells

## Background Information

EEF1A1, also named as EEF1A, EF1A and LENG7, belongs to the GTP-binding elongation factor family. This protein promotes the GTP-dependent binding of aminoacyl-tRNA to the A-site of ribosomes during protein biosynthesis. It is a typical housekeeping gene product required for the maintenance of cell growth and/or survival. In addition, EEF1A1 protects the aminoester bond against hydrolysis until a correct match between the codon on mRNA and the anti-codon on tRNA can be achieved. This antibody is a rabbit polyclonal antibody raised against residues near the terminus of human EEF1A1.

## Notable Publications

Author	Pubmed ID	Journal	Application
Cheng-Yu Lin	30224719	Sci Rep	WB
Chunxian Zeng	31561740	RNA Biol	WB
Daniel Arango	30449621	Cell	WB

## Storage

### Storage:

Store at -20°C. Stable for one year after shipment.

### Storage Buffer:

PBS with 0.02% sodium azide and 50% glycerol pH 7.3.

Aliquoting is unnecessary for -20°C storage

\*\*\* 20ul sizes contain 0.1% BSA

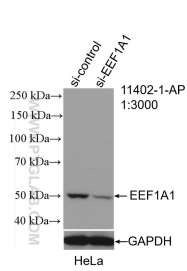
For technical support and original validation data for this product please contact:

T: 1 (888) 4PTGLAB (1-888-478-4522) (toll free in USA), or 1(312) 455-8498 (outside USA)

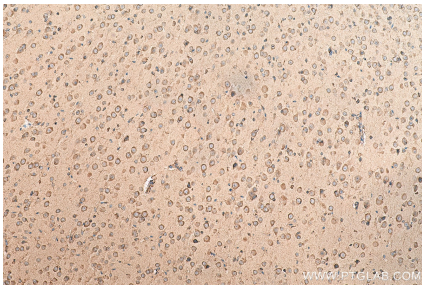
E: proteintech@ptglab.com  
W: ptglab.com

This product is exclusively available under Proteintech Group brand and is not available to purchase from any other manufacturer.

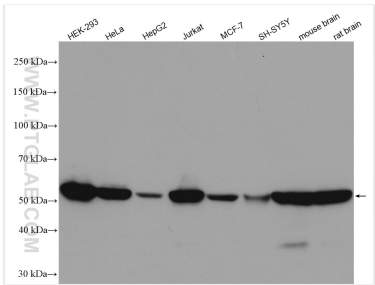
Selected Validation Data



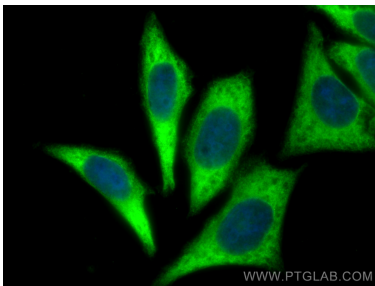
WB result of EEF1A1 antibody (11402-1-AP; 1:3000; incubated at room temperature for 1.5 hours) with sh-Control and sh-EEF1A1 transfected HeLa cells.



Immunohistochemical analysis of paraffin-embedded mouse brain tissue slide using 11402-1-AP (EEF1A1 antibody) at dilution of 1:200 (under 10x lens). Heat mediated antigen retrieval with Tris-EDTA buffer (pH 9.0).



Various lysates were subjected to SDS PAGE followed by western blot with 11402-1-AP (EEF1A1 antibody) at dilution of 1:6000 incubated at room temperature for 1.5 hours.



Immunofluorescent analysis of (-20°C Ethanol) fixed HepG2 cells using EEF1A1 antibody (11402-1-AP) at dilution of 1:400 and CoraLite®488-Conjugated Goat Anti-Rabbit IgG(H+L).