

For Research Use Only

# XPO6 Polyclonal antibody

Catalog Number: 11408-1-AP

Featured Product

8 Publications



## Basic Information

### Catalog Number:

11408-1-AP

### Size:

150ul, Concentration: 450 ug/ml by Nanodrop and 447 ug/ml by Bradford method using BSA as the standard;

### Source:

Rabbit

### Isotype:

IgG

### Immunogen Catalog Number:

AG1898

### GenBank Accession Number:

BC014071

### GeneID (NCBI):

23214

### UNIPROT ID:

Q96QU8

### Full Name:

exportin 6

### Calculated MW:

1125 aa, 129 kDa

### Observed MW:

128 kDa

### Purification Method:

Antigen affinity purification

### Recommended Dilutions:

WB 1:500-1:1000

IP 0.5-4.0 ug for 1.0-3.0 mg of total protein lysate

IHC 1:50-1:500

## Applications

### Tested Applications:

WB, IP, IHC, ELISA

### Cited Applications:

WB, IF

### Species Specificity:

human, mouse, rat

### Cited Species:

human, mouse, drosophila

**Note-IHC: suggested antigen retrieval with TE buffer pH 9.0; (\*) Alternatively, antigen retrieval may be performed with citrate buffer pH 6.0**

### Positive Controls:

WB : HeLa cells,

IP : HeLa cells,

IHC : human heart tissue, human kidney tissue, human ovary tissue, human placenta tissue, human skin tissue

## Background Information

Human XPO6 gene encodes a Ran-binding protein 20, exportin-6, belonging to the exportin family. Exportin-6 shuttles between the nucleus and the cytoplasm and mediates the nuclear export of actin and profilin-actin complexes in somatic cells. Interaction of exportin-6 and actin is achieved in a RanGTP-dependent manner, actin is a major cytoskeletal element which is normally kept cytoplasmic by exportin-6 driven nuclear export.

## Notable Publications

Author	Pubmed ID	Journal	Application
Ewan K S McRae	31653714	RNA	WB
Hugo Boruchowicz	32817212	J Virol	WB
Sergi Marco	34819513	Nat Commun	WB

## Storage

### Storage:

Store at -20°C. Stable for one year after shipment.

### Storage Buffer:

PBS with 0.02% sodium azide and 50% glycerol pH 7.3.

Aliquoting is unnecessary for -20°C storage

\*\*\* 20ul sizes contain 0.1% BSA

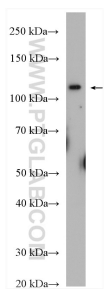
For technical support and original validation data for this product please contact:

T: 1 (888) 4PTGLAB (1-888-478-4522) (toll free in USA), or 1(312) 455-8498 (outside USA)

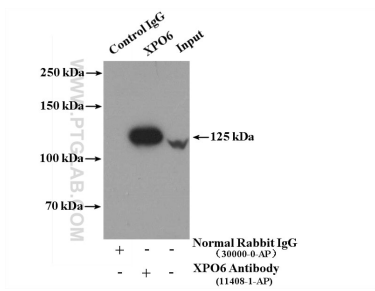
E: [proteintech@ptglab.com](mailto:proteintech@ptglab.com)  
W: [ptglab.com](http://ptglab.com)

This product is exclusively available under Proteintech Group brand and is not available to purchase from any other manufacturer.

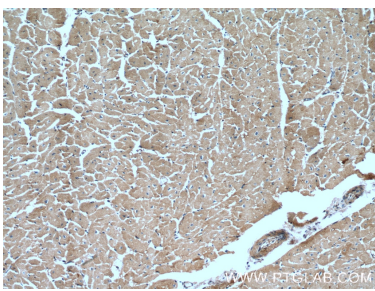
Selected Validation Data



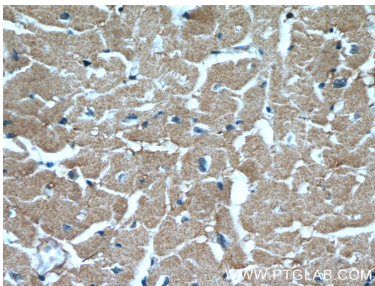
HeLa cells were subjected to SDS PAGE followed by western blot with 11408-1-AP (XPO6 antibody) at dilution of 1:600 incubated at room temperature for 1.5 hours.



IP result of anti-XPO6 (IP:11408-1-AP, 4ug; Detection:11408-1-AP 1:300) with HeLa cells lysate 4000ug.



Immunohistochemical analysis of paraffin-embedded human heart tissue slide using 11408-1-AP (XPO6 Antibody) at dilution of 1:200 (under 10x lens).



Immunohistochemical analysis of paraffin-embedded human heart tissue slide using 11408-1-AP (XPO6 Antibody) at dilution of 1:200 (under 40x lens).