

For Research Use Only

# NAT2 Polyclonal antibody

Catalog Number:11410-1-AP



## Basic Information

<b>Catalog Number:</b> 11410-1-AP	<b>GenBank Accession Number:</b> BC015878	<b>Purification Method:</b> Antigen affinity purification
<b>Size:</b> 150ul , Concentration: 500 ug/ml by Nanodrop;	<b>GeneID (NCBI):</b> 10	<b>Recommended Dilutions:</b> WB 1:2000-1:12000 IHC 1:50-1:500
<b>Source:</b> Rabbit	<b>UNIPROT ID:</b> P11245	
<b>Isotype:</b> IgG	<b>Full Name:</b> N-acetyltransferase 2 (arylamine N-acetyltransferase)	
<b>Immunogen Catalog Number:</b> AG1953	<b>Calculated MW:</b> 33.5 kDa	
	<b>Observed MW:</b> 38 kDa	

## Applications

### Tested Applications:

WB, IHC, ELISA

### Species Specificity:

human, mouse, rat

**Note-IHC: suggested antigen retrieval with TE buffer pH 9.0; (\*) Alternatively, antigen retrieval may be performed with citrate buffer pH 6.0**

### Positive Controls:

WB : rat liver tissue,

IHC : human small intestine tissue, human breast cancer tissue

## Background Information

NAT2 (Arylamine N-acetyltransferase 2) is well-known for its role in phase II metabolism of xenobiotics and drugs (PMID:36156098). NAT2 and its isozyme, arylamine N-acetyltransferase 1 (NAT1), play key roles in the detoxification of carcinogenic arylamines and xenobiotics by catalyzing acetyl-coenzyme A (CoA)-dependent biotransformation of arylamines to N-arylacetamides. Endogenous NAT2 expression is limited to the liver and small and large intestines, suggesting that NAT2 plays organ-specific roles (PMID:24467436).

## Storage

### Storage:

Store at -20°C. Stable for one year after shipment.

### Storage Buffer:

PBS with 0.02% sodium azide and 50% glycerol pH 7.3.

Aliquoting is unnecessary for -20°C storage

\*\*\* 20ul sizes contain 0.1% BSA

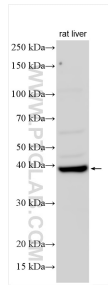
For technical support and original validation data for this product please contact:

T: 1 (888) 4PTGLAB (1-888-478-4522) (toll free in USA), or 1(312) 455-8498 (outside USA)

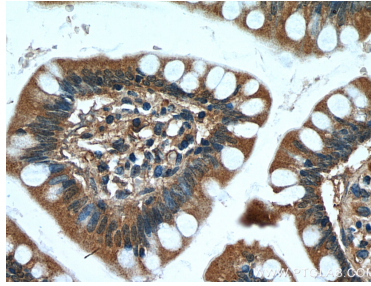
E: [proteintech@ptglab.com](mailto:proteintech@ptglab.com)  
W: [ptglab.com](http://ptglab.com)

This product is exclusively available under Proteintech Group brand and is not available to purchase from any other manufacturer.

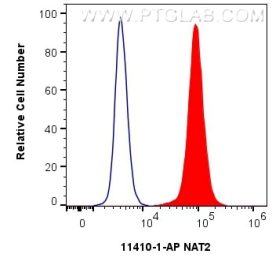
## Selected Validation Data



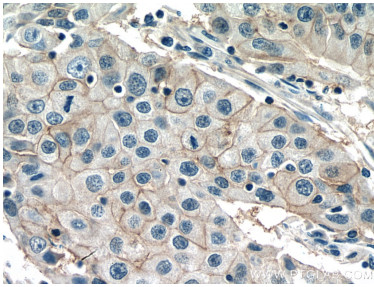
Various lysates were subjected to SDS PAGE followed by western blot with 11410-1-AP (NAT2 antibody) at dilution of 1:6000 incubated at room temperature for 1.5 hours.



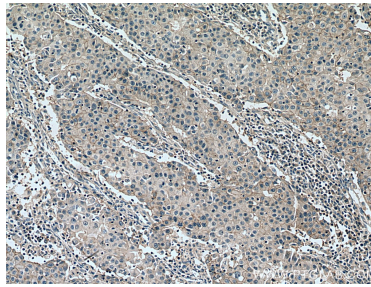
Immunohistochemical analysis of paraffin-embedded human small intestine tissue slide using 11410-1-AP (NAT2 antibody) at dilution of 1:200 (under 40x lens).



$1 \times 10^6$  MCF-7 cells were intracellularly stained with 0.8  $\mu$ g NAT2 Polyclonal antibody (11410-1-AP) and CoraLite®488-Conjugated Goat Anti-Rabbit IgG(H+L) (SA00013-2)(red), or 0.8  $\mu$ g Rabbit IgG control Rabbit PolyAb (30000-0-AP) (blue). Cells were fixed with 4% PFA and permeabilized with Flow Cytometry Perm Buffer (PF00011-C).



Immunohistochemical analysis of paraffin-embedded human breast cancer tissue slide using 11410-1-AP (NAT2 antibody) at dilution of 1:200 (under 40x lens). Heat mediated antigen retrieval with Tris-EDTA buffer (pH 9.0).



Immunohistochemical analysis of paraffin-embedded human breast cancer tissue slide using 11410-1-AP (NAT2 antibody) at dilution of 1:200 (under 10x lens). Heat mediated antigen retrieval with Tris-EDTA buffer (pH 9.0).