

For Research Use Only

# LYPD1 Polyclonal antibody

Catalog Number: 11415-1-AP



## Basic Information

<b>Catalog Number:</b> 11415-1-AP	<b>GenBank Accession Number:</b> BC017318	<b>Purification Method:</b> Antigen affinity purification
<b>Size:</b> 150ul , Concentration: 150 µg/ml by Nanodrop and 150 µg/ml by Bradford method using BSA as the standard;	<b>GeneID (NCBI):</b> 116372	<b>Recommended Dilutions:</b> WB 1:200-1:1000
<b>Source:</b> Rabbit	<b>Full Name:</b> LY6/PLAUR domain containing 1	
<b>Isotype:</b> IgG	<b>Calculated MW:</b> 141 aa, 15 kDa	
<b>Immunogen Catalog Number:</b> AG1965	<b>Observed MW:</b> 15 kDa	

## Applications

<b>Tested Applications:</b> WB, ELISA	<b>Positive Controls:</b> WB : mouse brain tissue, rat brain tissue
<b>Species Specificity:</b> mouse, rat	

## Background Information

LY6/PLAUR domain containing 1 (LYPD1) is a highly conserved glycosylphosphatidylinositol (GPI)-anchored protein. LYPD1 contains one cysteine-rich extracellular leukocyte antigen-6 (Ly6)/uPAR (PLAUR) domain followed by signal sequence that triggers posttranslational GPI-anchor addition incorporating mature, LYPD1 into the plasma membrane. LYPD1 is believed to act as a modulator of nicotinic acetylcholine receptors (nAChRs) activity. LYPD1 increases receptor desensitization in vitro and decreases affinity for ACh of alpha-4:beta-2-containing nAChRs. LYPD1 has 4 isoforms produced by alternative splicing (PMID: 33536191).

## Storage

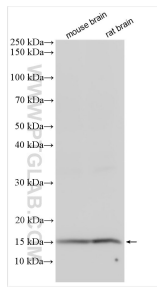
**Storage:**  
Store at -20°C. Stable for one year after shipment.  
**Storage Buffer:**  
PBS with 0.02% sodium azide and 50% glycerol pH 7.3.  
Aliquoting is unnecessary for -20°C storage

\*\*\* 20ul sizes contain 0.1% BSA

For technical support and original validation data for this product please contact:  
T: 1 (888) 4PTGLAB (1-888-478-4522) (toll free in USA), or 1(312) 455-8498 (outside USA)  
E: proteintech@ptglab.com  
W: ptglab.com

This product is exclusively available under Proteintech Group brand and is not available to purchase from any other manufacturer.

## Selected Validation Data



Various lysates were subjected to SDS PAGE followed by western blot with 11415-1-AP (LYPD1 antibody) at dilution of 1:400 incubated at room temperature for 1.5 hours.