

For Research Use Only

# COX6A2 Polyclonal antibody

Catalog Number: 11421-1-AP **1 Publications**



## Basic Information

|                                                                                                                          |                                                                     |                                                              |
|--------------------------------------------------------------------------------------------------------------------------|---------------------------------------------------------------------|--------------------------------------------------------------|
| <b>Catalog Number:</b><br>11421-1-AP                                                                                     | <b>GenBank Accession Number:</b><br>BC029818                        | <b>Purification Method:</b><br>Antigen affinity purification |
| <b>Size:</b><br>150ul , Concentration: 300 µg/ml by Nanodrop and 247 µg/ml by Bradford method using BSA as the standard; | <b>GeneID (NCBI):</b><br>1339                                       | <b>Recommended Dilutions:</b><br>IF 1:50-1:500               |
| <b>Source:</b><br>Rabbit                                                                                                 | <b>Full Name:</b><br>cytochrome c oxidase subunit VIa polypeptide 2 |                                                              |
| <b>Isotype:</b><br>IgG                                                                                                   | <b>Calculated MW:</b><br>97 aa, 11 kDa                              |                                                              |
| <b>Immunogen Catalog Number:</b><br>AG1985                                                                               |                                                                     |                                                              |

## Applications

|                                          |                                                       |
|------------------------------------------|-------------------------------------------------------|
| <b>Tested Applications:</b><br>IF, ELISA | <b>Positive Controls:</b><br>IF : human heart tissue, |
| <b>Cited Applications:</b><br>WB         |                                                       |
| <b>Species Specificity:</b><br>human     |                                                       |
| <b>Cited Species:</b><br>human           |                                                       |

## Background Information

COX6A2(Cytochrome c oxidase subunit 6A2, mitochondrial) is also named as COX6A, COX6AH and Belongs to the cytochrome c oxidase subunit 6A family. This protein is one of the nuclear-coded polypeptide chains of cytochrome c oxidase, the terminal oxidase in mitochondrial electron transport.

## Notable Publications

| Author             | Pubmed ID | Journal     | Application |
|--------------------|-----------|-------------|-------------|
| Oliva Claudia R CR | 20870728  | J Biol Chem | WB          |

## Storage

**Storage:**  
Store at -20°C. Stable for one year after shipment.  
**Storage Buffer:**  
PBS with 0.02% sodium azide and 50% glycerol pH 7.3.  
Aliquoting is unnecessary for -20°C storage

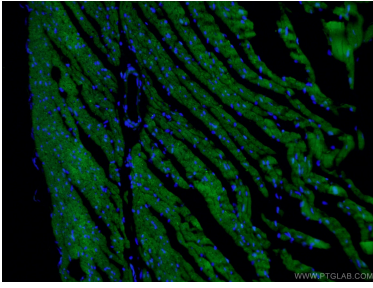
\*\*\* 20ul sizes contain 0.1% BSA

For technical support and original validation data for this product please contact:  
T: 1 (888) 4PTGLAB (1-888-478-4522) (toll free in USA), or 1(312) 455-8498 (outside USA)  
E: proteintech@ptglab.com  
W: ptglab.com

This product is exclusively available under Proteintech Group brand and is not available to purchase from any other manufacturer.

---

## Selected Validation Data



Immunofluorescent analysis of (4% PFA) fixed human heart tissue using 11421-1-AP (COX6A2 antibody) at dilution of 1:50 and Alexa Fluor 488-conjugated AffiniPure Goat Anti-Rabbit IgG(H+L).