

For Research Use Only

COX6B1 Polyclonal antibody

Catalog Number: 11425-1-AP **7 Publications**



Basic Information

Catalog Number: 11425-1-AP	GenBank Accession Number: BC001015	Purification Method: Antigen affinity purification
Size: 150ul , Concentration: 800 µg/ml by Nanodrop;	GeneID (NCBI): 1340	Recommended Dilutions: WB 1:1000-1:6000 IHC 1:50-1:500 IF 1:50-1:500
Source: Rabbit	Full Name: cytochrome c oxidase subunit VIb polypeptide 1 (ubiquitous)	
Isotype: IgG	Calculated MW: 80 aa, 10 kDa	
Immunogen Catalog Number: AG1984	Observed MW: 10-13 kDa	

Applications

Tested Applications: IF, IHC, WB, ELISA	Positive Controls: WB : HL-60 cells, Caco-2 cells, HeLa cells, HepG2 cells IHC : human liver cancer tissue, human gliomas tissue, human breast cancer tissue IF : A431 cells,
Cited Applications: WB	
Species Specificity: human, mouse, rat	
Cited Species: human, rat	

Note-IHC: suggested antigen retrieval with TE buffer pH 9.0; (*) Alternatively, antigen retrieval may be performed with citrate buffer pH 6.0

Background Information

COX6B1 (Cytochrome c oxidase subunit 6B1) is also named as COX6B and belongs to the cytochrome c oxidase subunit 6B family. It connects the two COX monomers into the physiological dimeric form. Defects in COX6B1 are a cause of mitochondrial complex IV deficiency (MT-C4D).

Notable Publications

Author	Pubmed ID	Journal	Application
Erika Fernández-Vizarra	36198313	Cell Metab	WB
Natalia Papadopoulos	29545370	J Cell Biol	WB
Neeraja Purandare	29540477	J Biol Chem	WB

Storage

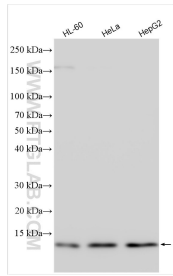
Storage:
Store at -20°C. Stable for one year after shipment.
Storage Buffer:
PBS with 0.02% sodium azide and 50% glycerol pH 7.3.
Aliquoting is unnecessary for -20°C storage

*** 20ul sizes contain 0.1% BSA

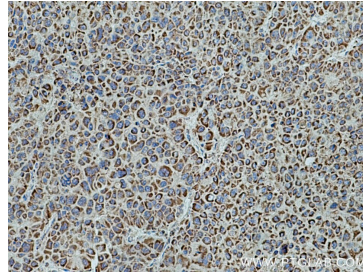
For technical support and original validation data for this product please contact:
T: 1 (888) 4PTGLAB (1-888-478-4522) (toll free in USA), or 1(312) 455-8498 (outside USA)
E: proteintech@ptglab.com
W: ptglab.com

This product is exclusively available under Proteintech Group brand and is not available to purchase from any other manufacturer.

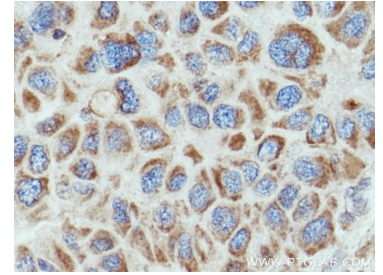
Selected Validation Data



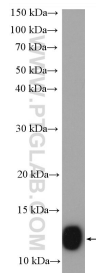
Various lysates were subjected to SDS PAGE followed by western blot with 11425-1-AP (COX6B1 antibody) at dilution of 1:3000 incubated at room temperature for 1.5 hours.



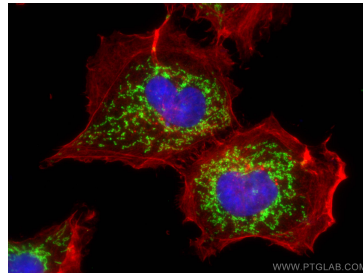
Immunohistochemical analysis of paraffin-embedded human liver cancer tissue slide using 11425-1-AP (COX6B1 antibody) at dilution of 1:200 (under 10x lens). Heat mediated antigen retrieval with Tris-EDTA buffer (pH 9.0).



Immunohistochemical analysis of paraffin-embedded human liver cancer tissue slide using 11425-1-AP (COX6B1 antibody) at dilution of 1:200 (under 40x lens). Heat mediated antigen retrieval with Tris-EDTA buffer (pH 9.0).



Caco-2 cells were subjected to SDS PAGE followed by western blot with 11425-1-AP (COX6B1 antibody) at dilution of 1:600 incubated at room temperature for 1.5 hours.



Immunofluorescent analysis of (4% PFA) fixed A431 cells using COX6B1 antibody (11425-1-AP) at dilution of 1:200 and CoraLite@488-Conjugated AffiniPure Goat Anti-Rabbit IgG(H+L), CL594-phalloidin (red).