

For Research Use Only

SerpinB3/SerpinB4 Polyclonal antibody



Catalog Number: 11428-1-AP

Basic Information

Catalog Number: 11428-1-AP	GenBank Accession Number: BC017401	Purification Method: Antigen affinity purification
Size: 150ul , Concentration: 700 µg/ml by Nanodrop and 327 µg/ml by Bradford method using BSA as the standard;	GeneID (NCBI): 6318	Recommended Dilutions: WB 1:500-1:2000
Source: Rabbit	Full Name: serpin peptidase inhibitor, clade B (ovalbumin), member 4	
Isotype: IgG	Calculated MW: 390 aa, 45 kDa	
Immunogen Catalog Number: AG1964	Observed MW: 42-45 kDa	

Applications

Tested Applications: WB, ELISA	Positive Controls: WB : A431 cells, COLO 320 cells, human saliva
Species Specificity: human	

Background Information

Squamous cell carcinoma antigens 1 and 2 (SCCA1 and 2, SERPIN B3 and B4) are members of the ovalbumin family of serine proteinase inhibitors. SCCA1 and SCCA2 are highly homologous proteins, 91% identical at the amino acid level, and probably evolving from a common ancestor gene. The neutral form of SCCA (SCCA1, or SERPINB3) is detected in the cytoplasm of normal and some malignant squamous cells, whereas the acidic form (SCCA2, or SERPINB4) is expressed primarily in malignant cells and is the major form found in the plasma of cancer patients. SCCA2 (SERPINB4), along with SCCA1 (SERPINB3), can be processed into smaller fragments that aggregate to form an autoantigen in psoriasis, probably by causing chronic inflammation. This antibody can recognize both SerpinB3 and SerpinB4.

Storage

Storage:
Store at -20°C. Stable for one year after shipment.
Storage Buffer:
PBS with 0.02% sodium azide and 50% glycerol pH 7.3.
Aliquoting is unnecessary for -20°C storage

*** 20ul sizes contain 0.1% BSA

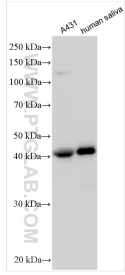
For technical support and original validation data for this product please contact:

T: 1 (888) 4PTGLAB (1-888-478-4522) (toll free in USA), or 1(312) 455-8498 (outside USA)

E: proteintech@ptglab.com
W: ptglab.com

This product is exclusively available under Proteintech Group brand and is not available to purchase from any other manufacturer.

Selected Validation Data



Various lysates were subjected to SDS PAGE followed by western blot with 11428-1-AP (SERPINB4 antibody) at dilution of 1:1000 incubated at room temperature for 1.5 hours.