

For Research Use Only

Kallistatin Polyclonal antibody

Catalog Number: 11430-2-AP **1 Publications**



Basic Information

Catalog Number: 11430-2-AP	GenBank Accession Number: BC014992	Purification Method: Antigen affinity purification
Size: 150ul , Concentration: 200 µg/ml by Bradford method using BSA as the standard;	GeneID (NCBI): 5267	Recommended Dilutions: WB 1:500-1:2400 IHC 1:20-1:200 IF 1:50-1:500
Source: Rabbit	UNIPROT ID: P29622	
Isotype: IgG	Full Name: serpin peptidase inhibitor, clade A (alpha-1 antiproteinase, antitrypsin), member 4	
Immunogen Catalog Number: AG1962	Calculated MW: 49 kDa	
	Observed MW: 49 kDa	

Applications

Tested Applications: WB, IF, IHC, ELISA	Positive Controls: WB : human spleen tissue, human plasma tissue IHC : human pancreas cancer tissue, IF : HCT 116 cells,
Cited Applications: WB, IF	
Species Specificity: human	
Cited Species: mouse	
Note-IHC: suggested antigen retrieval with TE buffer pH 9.0; (*) Alternatively, antigen retrieval may be performed with citrate buffer pH 6.0	

Notable Publications

Author	Pubmed ID	Journal	Application
Wentao Liang	35044447	Diabetes	WB,IF

Storage

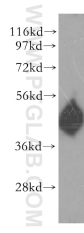
Storage:
Store at -20°C. Stable for one year after shipment.
Storage Buffer:
PBS with 0.02% sodium azide and 50% glycerol pH 7.3.
Aliquoting is unnecessary for -20°C storage

*** 20ul sizes contain 0.1% BSA

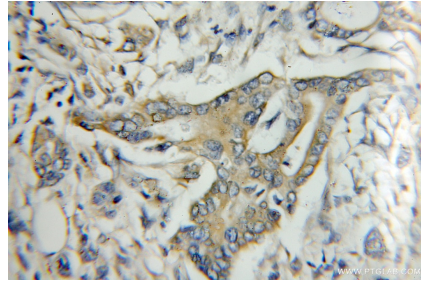
For technical support and original validation data for this product please contact:
T: 1 (888) 4PTGLAB (1-888-478-4522) (toll free in USA), or 1(312) 455-8498 (outside USA)
E: proteintech@ptglab.com
W: ptglab.com

This product is exclusively available under Proteintech Group brand and is not available to purchase from any other manufacturer.

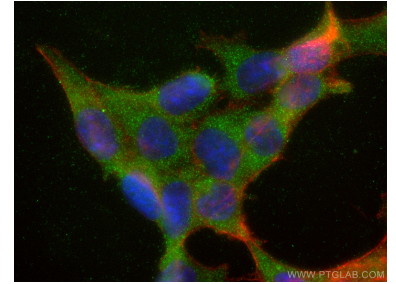
Selected Validation Data



human spleen tissue were subjected to SDS PAGE followed by western blot with 11430-2-AP (Kallistatin antibody) at dilution of 1:400 incubated at room temperature for 1.5 hours.



Immunohistochemical analysis of paraffin-embedded human pancreas cancer using 11430-2-AP (Kallistatin antibody) at dilution of 1:50 (under 10x lens).



Immunofluorescent analysis of (-20°C Ethanol) fixed HCT 116 cells using Kallistatin antibody (11430-2-AP) at dilution of 1:200 and CoraLite@488-Conjugated AffiniPure Goat Anti-Rabbit IgG(H+L) (SA00013-2), CL594-Phalloidin (red).