

For Research Use Only

HAT1 Polyclonal antibody

Catalog Number: 11432-1-AP

Featured Product

9 Publications



Basic Information

Catalog Number: 11432-1-AP	GenBank Accession Number: BC018682	Purification Method: Antigen affinity purification
Size: 150ul, Concentration: 600 µg/ml by Nanodrop;	GeneID (NCBI): 8520	Recommended Dilutions: WB 1:1000-1:8000 IP 0.5-4.0 µg for 1.0-3.0 mg of total protein lysate IHC 1:20-1:200 IF 1:50-1:500
Source: Rabbit	Full Name: histone acetyltransferase 1	
Isotype: IgG	Calculated MW: 419 aa, 50 kDa	
Immunogen Catalog Number: AG1952	Observed MW: 46 kDa	

Applications

Tested Applications: IF, IHC, IP, WB, ELISA	Positive Controls:
Cited Applications: IF, IHC, WB	WB: HeLa cells, HEK-293 cells, MDA-MB-231 cells, NIH/3T3 cells, C6 cells
Species Specificity: human, mouse, rat	IP: HepG2 cells,
Cited Species: human, rat, mouse	IHC: human lymphoma tissue, IF: mouse ovary tissue, HepG2 cells

Note-IHC: suggested antigen retrieval with TE buffer pH 9.0; (*) Alternatively, antigen retrieval may be performed with citrate buffer pH 6.0

Background Information

Notable Publications

Author	Pubmed ID	Journal	Application
Yan Sun	34564701	Cell Death Dis	WB
Yong-Wei Nie	27005820	Biochem Biophys Res Commun	IF
Minjie Chen	33662521	Alcohol	WB

Storage

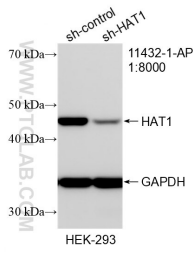
Storage:
Store at -20°C. Stable for one year after shipment.
Storage Buffer:
PBS with 0.02% sodium azide and 50% glycerol pH 7.3.
Aliquoting is unnecessary for -20°C storage

*** 20ul sizes contain 0.1% BSA

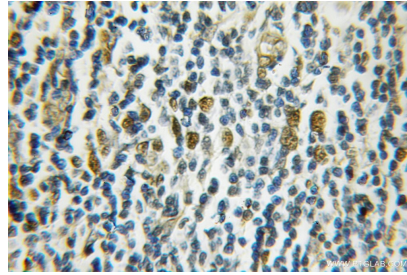
For technical support and original validation data for this product please contact:
T: 1 (888) 4PTGLAB (1-888-478-4522) (toll free in USA), or 1(312) 455-8498 (outside USA)
E: proteintech@ptglab.com
W: ptglab.com

This product is exclusively available under Proteintech Group brand and is not available to purchase from any other manufacturer.

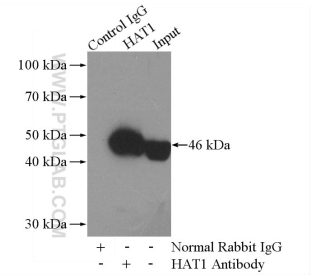
Selected Validation Data



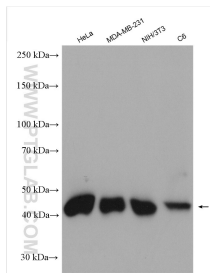
WB result of HAT1 antibody (11432-1-AP; 1:8000; incubated at room temperature for 1.5 hours) with sh-Control and sh-HAT1 transfected HEK-293 cells.



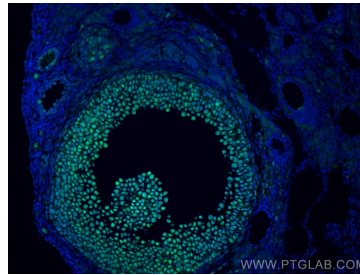
Immunohistochemical analysis of paraffin-embedded human lymphoma using 11432-1-AP (HAT1 antibody) at dilution of 1:50 (under 10x lens).



IP Result of anti-HAT1 (IP:11432-1-AP, 4 μ g; Detection:11432-1-AP 1:500) with HepG2 cells lysate 3200 μ g.



Various lysates were subjected to SDS PAGE followed by western blot with 11432-1-AP (HAT1 antibody) at dilution of 1:4000 incubated at room temperature for 1.5 hours.



Immunofluorescent analysis of (4% PFA) fixed mouse ovary tissue using HAT1 antibody (11432-1-AP) at dilution of 1:200 and Coralite[®]488-Conjugated AffiniPure Goat Anti-Rabbit IgG(H+L).