

For Research Use Only

HAT1 Polyclonal antibody, PBS Only

Catalog Number: 11432-1-PBS

Featured Product



Basic Information

Catalog Number:

11432-1-PBS

Size:

100ug, Concentration: 1 mg/ml by Nanodrop;

Source:

Rabbit

Isotype:

IgG

Immunogen Catalog Number:

AG1952

GenBank Accession Number:

BC018682

GeneID (NCBI):

8520

UNIPROT ID:

O14929

Full Name:

histone acetyltransferase 1

Calculated MW:

419 aa, 50 kDa

Observed MW:

46 kDa

Purification Method:

Antigen affinity purification

Applications

Tested Applications:

WB, IHC, IF/ICC, IF-P, IP, Indirect ELISA

Species Specificity:

human, mouse, rat

Storage

Storage:

Store at -80°C.

Storage Buffer:

PBS only, pH7.3

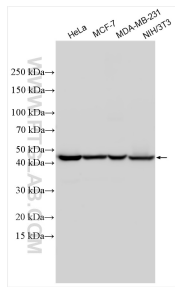
For technical support and original validation data for this product please contact:

T: 1 (888) 4PTGLAB (1-888-478-4522) (toll free in USA), or 1(312) 455-8498 (outside USA)

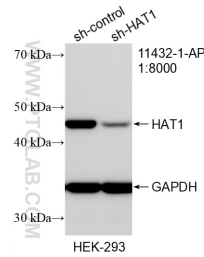
E: proteintech@ptglab.com
W: ptglab.com

This product is exclusively available under Proteintech Group brand and is not available to purchase from any other manufacturer.

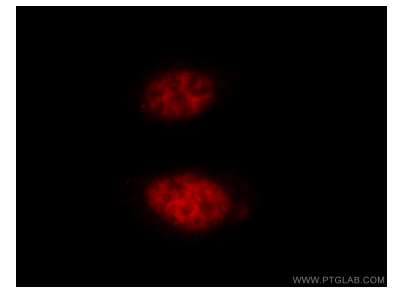
Selected Validation Data



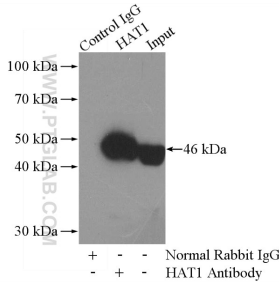
Various lysates were subjected to SDS PAGE followed by western blot with 11432-1-AP (HAT1 antibody) at dilution of 1:15000 incubated at room temperature for 1.5 hours. This data was developed using the same antibody clone with 11432-1-PBS in a different storage buffer formulation.



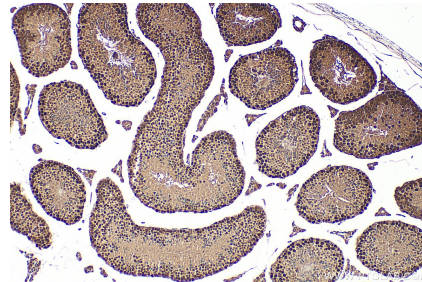
WB result of HAT1 antibody (11432-1-AP; 1:8000; incubated at room temperature for 1.5 hours) with sh-Control and sh-HAT1 transfected HEK-293 cells. This data was developed using the same antibody clone with 11432-1-PBS in a different storage buffer formulation.



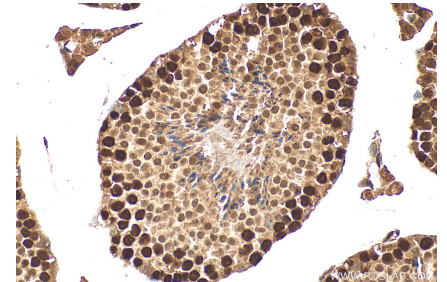
Immunofluorescent analysis of HepG2 cells, using HAT1 antibody 11432-1-AP at 1:25 dilution and Rhodamine-labeled goat anti-rabbit IgG (red). This data was developed using the same antibody clone with 11432-1-PBS in a different storage buffer formulation.



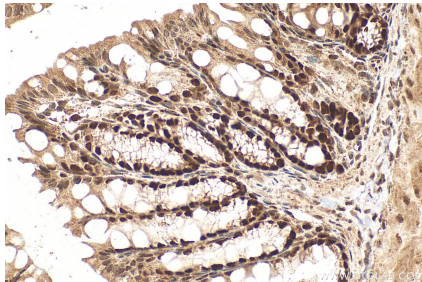
IP result of anti-HAT1 (IP:11432-1-AP, 4ug; Detection:11432-1-AP 1:500) with HepG2 cells lysate 3200ug. This data was developed using the same antibody clone with 11432-1-PBS in a different storage buffer formulation.



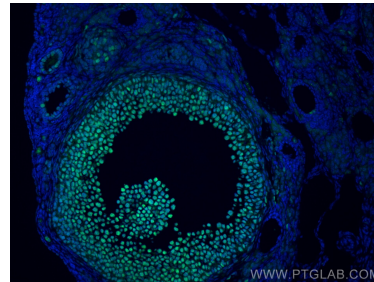
Immunohistochemical analysis of paraffin-embedded mouse testis tissue slide using 11432-1-AP (HAT1 antibody) at dilution of 1:500 (under 10x lens). Heat mediated antigen retrieval with Tris-EDTA buffer (pH 9.0). This data was developed using the same antibody clone with 11432-1-PBS in a different storage buffer formulation.



Immunohistochemical analysis of paraffin-embedded mouse testis tissue slide using 11432-1-AP (HAT1 antibody) at dilution of 1:500 (under 40x lens). Heat mediated antigen retrieval with Tris-EDTA buffer (pH 9.0). This data was developed using the same antibody clone with 11432-1-PBS in a different storage buffer formulation.



Immunohistochemical analysis of paraffin-embedded mouse colon tissue slide using 11432-1-AP (HAT1 antibody) at dilution of 1:200 (under 40x lens). Heat mediated antigen retrieval with Tris-EDTA buffer (pH 9.0). This data was developed using the same antibody clone with 11432-1-PBS in a different storage buffer formulation.



Immunofluorescent analysis of (4% PFA) fixed mouse ovary tissue using HAT1 antibody (11432-1-AP) at dilution of 1:200 and CoraLite®488-Conjugated AffiniPure Goat Anti-Rabbit IgG(H+L). This data was developed using the same antibody clone with 11432-1-PBS in a different storage buffer formulation.