

For Research Use Only

CRBN Polyclonal antibody

Catalog Number: 11435-1-AP

Featured Product

21 Publications



Basic Information

Catalog Number:

11435-1-AP

Size:

150ul, Concentration: 173 µg/ml by Bradford method using BSA as the standard;

Source:

Rabbit

Isotype:

IgG

Immunogen Catalog Number:

AG1951

GenBank Accession Number:

BC017419

GeneID (NCBI):

51185

Full Name:

cereblon

Calculated MW:

442 aa, 51 kDa

Observed MW:

51-55 kDa

Purification Method:

Antigen affinity purification

Recommended Dilutions:

WB 1:500-1:1000

IHC 1:100-1:400

IF 1:50-1:500

Applications

Tested Applications:

IF, IHC, WB, ELISA

Cited Applications:

IHC, IP, WB

Species Specificity:

human, mouse, rat

Cited Species:

human, mouse

Note-IHC: suggested antigen retrieval with TE buffer pH 9.0; (*) Alternatively, antigen retrieval may be performed with citrate buffer pH 6.0

Positive Controls:

WB: mouse heart tissue, A375 cells, COLO 320 cells, human brain tissue, human heart tissue, mouse liver tissue

IHC: human cervical cancer tissue,

IF: COLO 320 cells, A375 cells

Background Information

CRBN plays an important role in assembly and surface expression of functional BK(Ca) channels. The mutation of human cereblon gene (CRBN) is related with mild mental retardation, and causes ARNSID (nonsyndromal intellectual disability) by disturbing the developmental regulation of BK(Ca) in brain regions that are critical for memory and learning. CRBN is also identified as important thalidomide-binding protein for limb outgrowth in zebrafish and chicks. It can be detected a band above 51 kDa (maybe 55 kDa) in HT22 cells (PMID: 21232561).

Notable Publications

Author	Pubmed ID	Journal	Application
Greenberg Alexandra J AJ	23992230	Eur J Haematol	WB
Chiara Maniaci	29018234	Nat Commun	WB
Gerard L Brien	30431433	Elife	WB

Storage

Storage:

Store at -20°C. Stable for one year after shipment.

Storage Buffer:

PBS with 0.02% sodium azide and 50% glycerol pH 7.3.

Aliquoting is unnecessary for -20°C storage

*** 20ul sizes contain 0.1% BSA

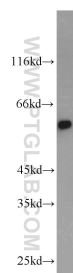
For technical support and original validation data for this product please contact:

T: 1 (888) 4PTGLAB (1-888-478-4522) (toll free in USA), or 1(312) 455-8498 (outside USA)

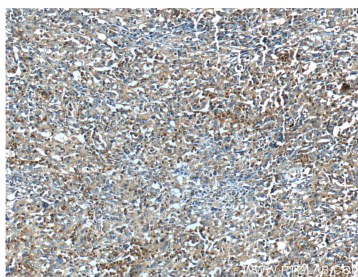
E: proteintech@ptglab.com
W: ptglab.com

This product is exclusively available under Proteintech Group brand and is not available to purchase from any other manufacturer.

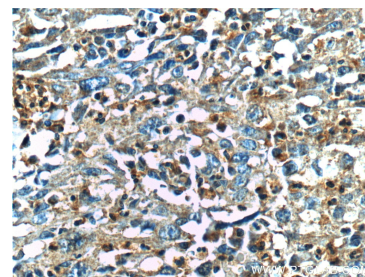
Selected Validation Data



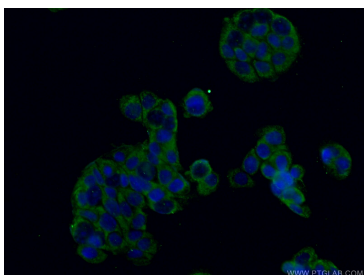
mouse heart tissue were subjected to SDS PAGE followed by western blot with 11435-1-AP (CRBN antibody) at dilution of 1:1000 incubated at room temperature for 1.5 hours.



Immunohistochemical analysis of paraffin-embedded human cervical cancer tissue slide using 11435-1-AP (CRBN Antibody) at dilution of 1:200 (under 10x lens).



Immunohistochemical analysis of paraffin-embedded human cervical cancer tissue slide using 11435-1-AP (CRBN Antibody) at dilution of 1:200 (under 40x lens).



Immunofluorescent analysis of (-20°C Ethanol) fixed COLO 320 cells using 11435-1-AP (CRBN antibody) at dilution of 1:50 and CoraLite488-Conjugated AffiniPure Goat Anti-Rabbit IgG(H+L).