

For Research Use Only

PRAME Polyclonal antibody

Catalog Number: 11438-1-AP



Basic Information

Catalog Number:

11438-1-AP

Size:

150ul, Concentration: 450 ug/ml by Nanodrop;

Source:

Rabbit

Isotype:

IgG

Immunogen Catalog Number:

AG1906

GenBank Accession Number:

BC014074

GeneID (NCBI):

23532

UNIPROT ID:

P78395

Full Name:

preferentially expressed antigen in melanoma

Calculated MW:

509 aa, 58 kDa

Observed MW:

50-58 kDa

Purification Method:

Antigen affinity purification

Recommended Dilutions:

WB 1:500-1:1000

IP 0.5-4.0 ug for 1.0-3.0 mg of total protein lysate

IHC 1:50-1:500

Applications

Tested Applications:

WB, IP, IHC, ELISA

Species Specificity:

human

Note-IHC: suggested antigen retrieval with TE buffer pH 9.0; (*) Alternatively, antigen retrieval may be performed with citrate buffer pH 6.0

Positive Controls:

WB : K-562 cells,

IP : K-562 cells,

IHC : human lung cancer tissue,

Background Information

The PRAME (preferentially expressed antigen of melanoma) gene was previously shown to be overexpressed in ovarian/primary peritoneal serous carcinoma compared with malignant mesothelioma using gene expression arrays. It is considered a melanocyte differentiation antigen which is overexpressed in both solid and hematologic tumors. In normal tissue, a very low level of PRAME expression is found in normal testis, adrenals, ovary and endometrium. A high level of PRAME expression has been reported for several solid tumors, including ovarian cancer, breast cancer, lung cancer and melanomas, medulloblastoma, sarcomas, head and neck cancers, neuroblastoma, renal cancer, and Wilms'tumor. As a nuclear transcriptional repressor protein, PRAME binds to retinoic acid receptor α , thereby inhibiting retinoic acid induced differentiation, growth arrest, and apoptosis.

Storage

Storage:

Store at -20°C. Stable for one year after shipment.

Storage Buffer:

PBS with 0.02% sodium azide and 50% glycerol pH 7.3.

Aliquoting is unnecessary for -20°C storage

*** 20ul sizes contain 0.1% BSA

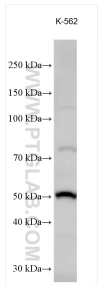
For technical support and original validation data for this product please contact:

T: 1 (888) 4PTGLAB (1-888-478-4522) (toll free in USA), or 1(312) 455-8498 (outside USA)

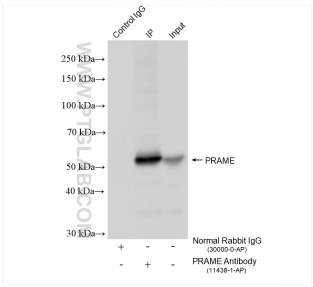
E: proteintech@ptglab.com
W: ptglab.com

This product is exclusively available under Proteintech Group brand and is not available to purchase from any other manufacturer.

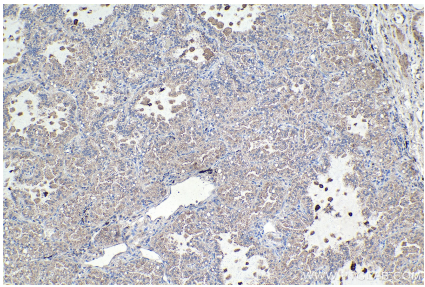
Selected Validation Data



K-562 cells were subjected to SDS PAGE followed by western blot with 11438-1-AP (PRAME antibody) at dilution of 1:500 incubated at room temperature for 1.5 hours.



IP result of anti-PRAME (IP:11438-1-AP, 4ug; Detection:11438-1-AP 1:300) with K-562 cells lysate 2400 ug.



Immunohistochemical analysis of paraffin-embedded human lung cancer tissue slide using 11438-1-AP (PRAME antibody) at dilution of 1:200 (under 10x lens). Heat mediated antigen retrieval with Tris-EDTA buffer (pH 9.0).