

For Research Use Only

GRK6 Polyclonal antibody

Catalog Number: 11439-1-AP

Featured Product

2 Publications



Basic Information

Catalog Number: 11439-1-AP	GenBank Accession Number: BC017272	Purification Method: Antigen affinity purification
Size: 150ul, Concentration: 200 µg/ml by Nanodrop and 150 µg/ml by Bradford method using BSA as the standard;	GeneID (NCBI): 2870	Recommended Dilutions: WB 1:500-1:2000 IP 0.5-4.0 ug for IP and 1:500-1:1000 for WB
Source: Rabbit	Full Name: G protein-coupled receptor kinase 6	Calculated MW: 66 kDa
Isotype: IgG	Observed MW: 66 kDa	Immunogen Catalog Number: AG1992

Applications

Tested Applications: IHC, IP, WB, ELISA	Positive Controls: WB: HEK-293 cells, human kidney tissue
Cited Applications: IHC, WB	IP: HEK-293 cells,
Species Specificity: human	IHC: human renal cell carcinoma tissue,
Cited Species: human	

Note-IHC: suggested antigen retrieval with TE buffer pH 9.0; (*) Alternatively, antigen retrieval may be performed with citrate buffer pH 6.0

Background Information

Notable Publications

Author	Pubmed ID	Journal	Application
Fan Yang	26347956	Nat Commun	WB
Sumei Yao	34136390	Front Oncol	WB, IHC

Storage

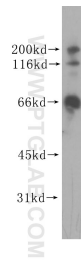
Storage:
Store at -20°C. Stable for one year after shipment.
Storage Buffer:
PBS with 0.02% sodium azide and 50% glycerol pH 7.3.
Aliquoting is unnecessary for -20°C storage

*** 20ul sizes contain 0.1% BSA

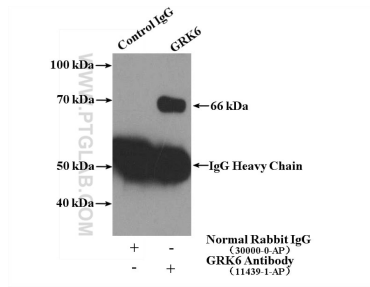
For technical support and original validation data for this product please contact:
T: 1 (888) 4PTGLAB (1-888-478-4522) (toll free in USA), or 1(312) 455-8498 (outside USA)
E: proteintech@ptglab.com
W: ptglab.com

This product is exclusively available under Proteintech Group brand and is not available to purchase from any other manufacturer.

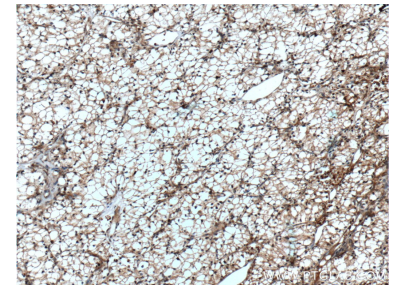
Selected Validation Data



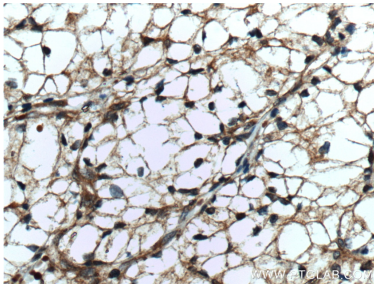
HEK-293 cells were subjected to SDS PAGE followed by western blot with 11439-1-AP (GRK6 antibody) at dilution of 1:500 incubated at room temperature for 1.5 hours.



IP Result of anti-GRK6 (IP:11439-1-AP, 4ug; Detection:11439-1-AP 1:500) with HEK-293 cells lysate 1120ug.



Immunohistochemical analysis of paraffin-embedded human renal cell carcinoma tissue slide using 11439-1-AP (GRK6 Antibody) at dilution of 1:100 (under 10x lens). Heat mediated antigen retrieval with Tris-EDTA buffer (pH 9.0).



Immunohistochemical analysis of paraffin-embedded human renal cell carcinoma tissue slide using 11439-1-AP (GRK6 Antibody) at dilution of 1:100 (under 40x lens). Heat mediated antigen retrieval with Tris-EDTA buffer (pH 9.0).