

For Research Use Only

EHD2 Polyclonal antibody

Catalog Number: 11440-1-AP

Featured Product

7 Publications



Basic Information

Catalog Number:

11440-1-AP

Size:

150ul, Concentration: 400 ug/ml by Bradford method using BSA as the standard;

Source:

Rabbit

Isotype:

IgG

Immunogen Catalog Number:

AG2002

GenBank Accession Number:

BC014445

GeneID (NCBI):

30846

UNIPROT ID:

Q9NZN4

Full Name:

EH-domain containing 2

Calculated MW:

543 aa, 61 kDa

Observed MW:

61 kDa

Purification Method:

Antigen affinity purification

Recommended Dilutions:

WB 1:1000-1:4000

IP 0.5-4.0 ug for 1.0-3.0 mg of total protein lysate

IHC 1:2000-1:8000

Applications

Tested Applications:

WB, IHC, IP, ELISA

Cited Applications:

WB, IHC, IF

Species Specificity:

human, mouse, rat

Cited Species:

human, mouse, pig

Note-IHC: suggested antigen retrieval with TE buffer pH 9.0; (*) Alternatively, antigen retrieval may be performed with citrate buffer pH 6.0

Positive Controls:

WB: HeLa cells, human heart tissue, mouse heart tissue, rat heart tissue

IP: mouse heart tissue,

IHC: human breast cancer tissue, human normal colon, human oesophagus cancer tissue, human ovary tumor tissue

Notable Publications

Author	Pubmed ID	Journal	Application
Jingjing Lv	26180943	Cancer Invest	WB
Tamako Nishimura	35834519	PLoS One	IF
Chengqi Guan	33356637	Cancer Invest	IHC

Storage

Storage:

Store at -20°C. Stable for one year after shipment.

Storage Buffer:

PBS with 0.02% sodium azide and 50% glycerol pH 7.3.

Aliquoting is unnecessary for -20°C storage

*** 20ul sizes contain 0.1% BSA

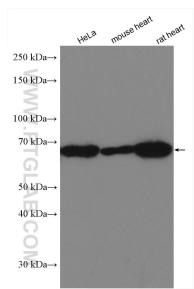
For technical support and original validation data for this product please contact:

T: 1 (888) 4PTGLAB (1-888-478-4522) (toll free in USA), or 1(312) 455-8498 (outside USA)

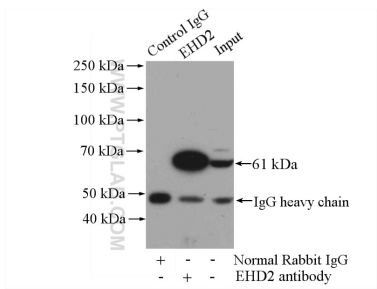
E: proteintech@ptglab.com
W: ptglab.com

This product is exclusively available under Proteintech Group brand and is not available to purchase from any other manufacturer.

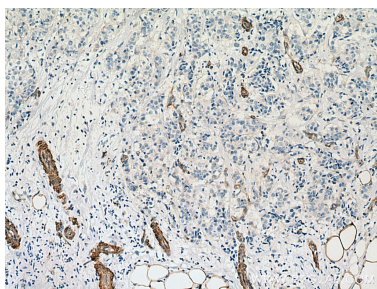
Selected Validation Data



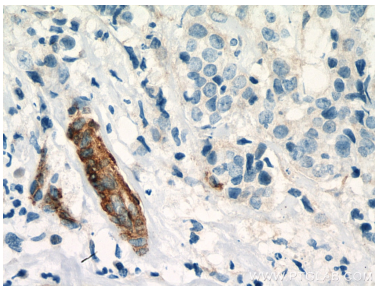
Various lysates were subjected to SDS PAGE followed by western blot with 11440-1-AP (EHD2 antibody) at dilution of 1:2000 incubated at room temperature for 1.5 hours.



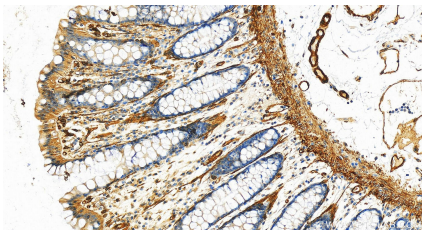
IP result of anti-EHD2 (IP:11440-1-AP, 4ug; Detection:11440-1-AP 1:800) with mouse heart tissue lysate 4000ug.



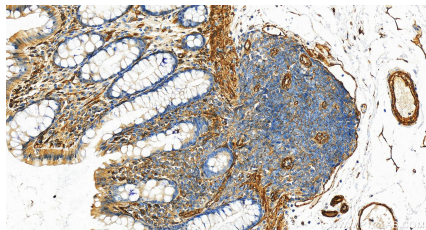
Immunohistochemical analysis of paraffin-embedded human breast cancer tissue slide using 11440-1-AP (EHD2 antibody) at dilution of 1:4000 (under 10x lens). Heat mediated antigen retrieval with Tris-EDTA buffer (pH 9.0).



Immunohistochemical analysis of paraffin-embedded human breast cancer tissue slide using 11440-1-AP (EHD2 antibody) at dilution of 1:4000 (under 40x lens). Heat mediated antigen retrieval with Tris-EDTA buffer (pH 9.0).



Immunohistochemical analysis of paraffin-embedded human normal colon slide using 11440-1-AP (EHD2 antibody) at dilution of 1:400 (under 20x lens). Heat mediated antigen retrieval with Tris-EDTA buffer (pH 9.0).



Immunohistochemical analysis of paraffin-embedded human normal colon slide using 11440-1-AP (EHD2 antibody) at dilution of 1:400 (under 20x lens). Heat mediated antigen retrieval with Tris-EDTA buffer (pH 9.0).