

For Research Use Only

PNPLA3 Polyclonal antibody

Catalog Number: 11442-1-AP

4 Publications



Basic Information

Catalog Number: 11442-1-AP	GenBank Accession Number: BC014449	Purification Method: Antigen affinity purification
Size: 150ul , Concentration: 550 ug/ml by Nanodrop;	GeneID (NCBI): 80339	Recommended Dilutions: WB 1:500-1:1000 IHC 1:50-1:500
Source: Rabbit	UNIPROT ID: Q9NST1	
Isotype: IgG	Full Name: patatin-like phospholipase domain containing 3	
Immunogen Catalog Number: AG1959	Calculated MW: 481 aa, 53 kDa	
	Observed MW: 50-70 kDa, 130-150 kDa	

Applications

Tested Applications: WB, IHC, ELISA	Positive Controls: WB : L02 cells, IHC : human liver cancer tissue,
Cited Applications: WB	
Species Specificity: human, mouse	
Cited Species: human, mouse, rat, zebrafish	
Note-IHC: suggested antigen retrieval with TE buffer pH 9.0; (*) Alternatively, antigen retrieval may be performed with citrate buffer pH 6.0	

Background Information

PNPLA3 belongs to a family of proteins that share a domain that was first identified in patatin, a major soluble protein of potato tubers with nonspecific acyl hydrolase activity. The domain differs from classical lipases by employing a catalytic dyad (Ser-Asp), rather than a catalytic triad, to effect hydrolysis. PNPLA3 is expressed primarily in liver and adipose tissue, in which it partitions to membranes and lipid droplets. Real-time PCR of cDNA from human tissues indicated that PNPLA3 expression was highest in the liver, followed by skin and adipose tissue. PNPLA3 is expressed at the highest levels in adipose tissue of mice. The PNPLA3 protein was expected at 50-70 kDa, as observed; the additional band at approximately 130-150 kDa is a oligomer bands. (PMID: 20385813, PMID: 24931521, PMID: 23023705)

Notable Publications

Author	Pubmed ID	Journal	Application
Jiesi Xu	36346641	Diabetes	WB
Qiaoli Chen	28696211	Diabetes	WB
Pan Li	35429444	Arch Biochem Biophys	WB

Storage

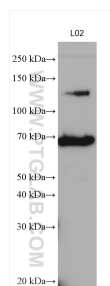
Storage:
Store at -20°C. Stable for one year after shipment.
Storage Buffer:
PBS with 0.02% sodium azide and 50% glycerol pH 7.3.
Aliquoting is unnecessary for -20°C storage

*** 20ul sizes contain 0.1% BSA

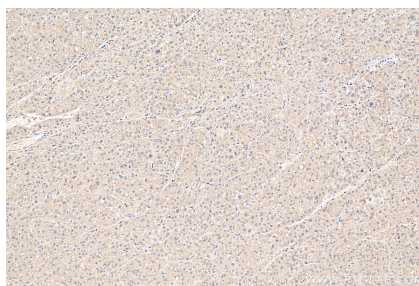
For technical support and original validation data for this product please contact:
T: 1 (888) 4PTGLAB (1-888-478-4522) (toll free in USA), or 1(312) 455-8498 (outside USA)
E: proteintech@ptglab.com
W: ptglab.com

This product is exclusively available under Proteintech Group brand and is not available to purchase from any other manufacturer.

Selected Validation Data



L02 cells were subjected to SDS PAGE followed by western blot with 11442-1-AP (PNPLA3 antibody) at dilution of 1:500 incubated at room temperature for 1.5 hours.



Immunohistochemical analysis of paraffin-embedded human liver cancer tissue slide using 11442-1-AP (PNPLA3 antibody) at dilution of 1:200 (under 10x lens). Heat mediated antigen retrieval with Tris-EDTA buffer (pH 9.0).