

For Research Use Only

VCAM-1/CD106 Polyclonal antibody, PBS Only

Catalog Number: 11444-1-PBS

Featured Product



Basic Information

Catalog Number:

11444-1-PBS

Size:

100ug , Concentration: 1 mg/ml by
Nanodrop;

Source:

Rabbit

Isotype:

IgG

Immunogen Catalog Number:

AG1993

GenBank Accession Number:

BC017276

GeneID (NCBI):

7412

UNIPROT ID:

P19320

Full Name:

vascular cell adhesion molecule 1

Calculated MW:

739 aa, 81 kDa

Observed MW:

110 kDa

Purification Method:

Antigen affinity purification

Applications

Tested Applications:

WB, IHC, ELISA

Species Specificity:

human

Background Information

Vascular cell adhesion molecule 1 (VCAM1), also known as CD106, is a 110-kDa transmembrane glycoprotein belonging to the immunoglobulin gene superfamily. VCAM1 is expressed by cytokine-activated endothelium, interacts with integrin VLA4 ($\alpha 4 \beta 1$) present on the surface of leukocytes, and mediates both adhesion and signal transduction. It is also expressed either constitutively or inducibly in a variety of other cell types, including vascular smooth muscle cells, differentiating skeletal muscle cells, renal and neural epithelial cells, macrophages (Kupffer cells), dendritic cells, and bone marrow stromal cells (PMID: 7507076, 11359843).

Storage

Storage:

Store at -80°C .

Storage Buffer:

PBS only, pH7.3

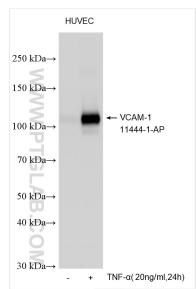
For technical support and original validation data for this product please contact:

T: 1 (888) 4PTGLAB (1-888-478-4522) (toll free
in USA), or 1(312) 455-8498 (outside USA)

E: proteintech@ptglab.com
W: ptglab.com

This product is exclusively available under Proteintech Group brand and is not available to purchase from any other manufacturer.

Selected Validation Data



Untreated or TNF- α -treated HUVEC cells were subjected to SDS PAGE followed by western blot with 11444-1-AP (VCAM-1/CD106 antibody) at dilution of 1:1000 incubated at room temperature for 1.5 hours. This data was developed using the same antibody clone with 11444-1-PBS in a different storage buffer formulation.

