

For Research Use Only

PRUNE2 Polyclonal antibody

Catalog Number: 11458-1-AP

Featured Product

4 Publications



Basic Information

Catalog Number:

11458-1-AP

Size:

150ul, Concentration: 300 ug/ml by Nanodrop and 260 ug/ml by Bradford method using BSA as the standard;

Source:

Rabbit

Isotype:

IgG

Immunogen Catalog Number:

AG2025

GenBank Accession Number:

BC019095

GeneID (NCBI):

158471

UNIPROT ID:

Q8WUY3

Full Name:

prune homolog 2 (Drosophila)

Calculated MW:

341 kDa

Observed MW:

140~150 kDa

Purification Method:

Antigen affinity purification

Recommended Dilutions:

IHC 1:50-1:500

Applications

Tested Applications:

IHC, ELISA

Cited Applications:

WB, IP, IF, IHC

Species Specificity:

human

Cited Species:

human, mouse

Positive Controls:

IHC : human liver cancer tissue,

Note-IHC: suggested antigen retrieval with TE buffer pH 9.0; (*) Alternatively, antigen retrieval may be performed with citrate buffer pH 6.0

Background Information

PRUNE2 gene, also named BMCC1, encodes protein prune homolog 2. PRUNE2 gene are overlapping with PCA3, one of the most prostate cancer specific markers. PRUNE2 may play an important role in regulating differentiation, survival and aggressiveness of the tumor cells. Besides its high level of expression seen in the nervous system (brain, cerebellum and spinal cord), it is also expressed at high levels in noneuroblastoma, rhabdomyosarcoma, melanoma and some osteosarcoma cell lines, whereas at only low levels in cancer cell lines of liver, breast, thyroid and colon. The Calculated molecular weight of this protein is 340 kDa. Our antibody specifically recognises the 140-150 kDa band which is an isoform or cleaved fragment of PRUNE2 (PMID:21234814).

Notable Publications

Author	Pubmed ID	Journal	Application
Ahmad Salameh	26080435	Proc Natl Acad Sci U S A	WB, IF, IP
Y Tatsumi	25611382	Cell Death Dis	WB, IHC
Ting Li	35069850	Exp Ther Med	WB, IHC

Storage

Storage:

Store at -20°C. Stable for one year after shipment.

Storage Buffer:

PBS with 0.02% sodium azide and 50% glycerol pH 7.3.

Aliquoting is unnecessary for -20°C storage

*** 20ul sizes contain 0.1% BSA

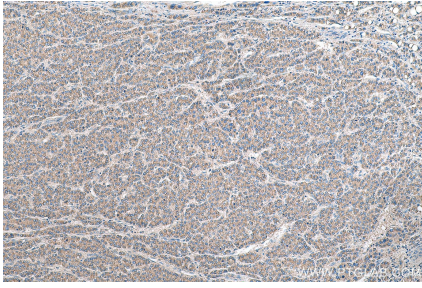
For technical support and original validation data for this product please contact:

T: 1 (888) 4PTGLAB (1-888-478-4522) (toll free in USA), or 1(312) 455-8498 (outside USA)

E: proteintech@ptglab.com
W: ptglab.com

This product is exclusively available under Proteintech Group brand and is not available to purchase from any other manufacturer.

Selected Validation Data



Immunohistochemical analysis of paraffin-embedded human liver cancer tissue slide using 11458-1-AP (PRUNE2 antibody) at dilution of 1:200 (under 10x lens). Heat mediated antigen retrieval with Tris-EDTA buffer (pH 9.0).