

For Research Use Only

SPDEF Polyclonal antibody

Catalog Number: 11467-1-AP **8 Publications**



Basic Information

Catalog Number: 11467-1-AP	GenBank Accession Number: BC021299	Purification Method: Antigen affinity purification
Size: 150ul , Concentration: 600 µg/ml by Nanodrop;	GeneID (NCBI): 25803	Recommended Dilutions: WB 1:500-1:2000
Source: Rabbit	Full Name: SAM pointed domain containing ets transcription factor	
Isotype: IgG	Calculated MW: 335 aa, 38 kDa	
Immunogen Catalog Number: AG2020	Observed MW: 38-44 kDa	

Applications

Tested Applications: WB, ELISA	Positive Controls: WB : MCF-7 cells,
Cited Applications: IF, IHC, WB	
Species Specificity: human	
Cited Species: human, rat, mouse	

Background Information

Notable Publications

Author	Pubmed ID	Journal	Application
Yu-Hua Lin	34139546	Phytomedicine	WB,IF
Jian Fang	35297435	Food Funct	WB
Linhao Zhang	32144600	Dig Dis Sci	WB

Storage

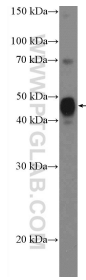
Storage:
Store at -20°C. Stable for one year after shipment.
Storage Buffer:
PBS with 0.02% sodium azide and 50% glycerol pH 7.3.
Aliquoting is unnecessary for -20°C storage

***** 20ul sizes contain 0.1% BSA**

For technical support and original validation data for this product please contact:
T: 1 (888) 4PTGLAB (1-888-478-4522) (toll free in USA), or 1(312) 455-8498 (outside USA)
E: proteintech@ptglab.com
W: ptglab.com

This product is exclusively available under Proteintech Group brand and is not available to purchase from any other manufacturer.

Selected Validation Data



MCF-7 cells were subjected to SDS PAGE followed by western blot with 11467-1-AP (SPDEF Antibody) at dilution of 1:1000 incubated at room temperature for 1.5 hours.