

For Research Use Only

SCMH1 Polyclonal antibody

Catalog Number: 11489-1-AP



Basic Information

Catalog Number: 11489-1-AP	GenBank Accession Number: BC021252	Purification Method: Antigen affinity purification
Size: 150ul , Concentration: 550 µg/ml by Nanodrop and 267 µg/ml by Bradford method using BSA as the standard;	GeneID (NCBI): 22955	Recommended Dilutions: WB 1:500-1:1000 IHC 1:20-1:200
Source: Rabbit	Full Name: sex comb on midleg homolog 1 (Drosophila)	
Isotype: IgG	Calculated MW: 599aa,66 kDa; 660aa,73 kDa	
Immunogen Catalog Number: AG1972	Observed MW: 58 kDa	

Applications

Tested Applications: IHC, WB, ELISA	Positive Controls: WB : HT-1080 cells, U-251 cells
Species Specificity: human, mouse, rat	IHC : human pancreas cancer tissue,
Note-IHC: suggested antigen retrieval with TE buffer pH 9.0; (*) Alternatively, antigen retrieval may be performed with citrate buffer pH 6.0	

Background Information

Storage

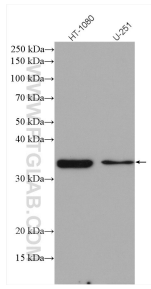
Storage:
Store at -20°C. Stable for one year after shipment.
Storage Buffer:
PBS with 0.02% sodium azide and 50% glycerol pH 7.3.
Aliquoting is unnecessary for -20°C storage

*** 20ul sizes contain 0.1% BSA

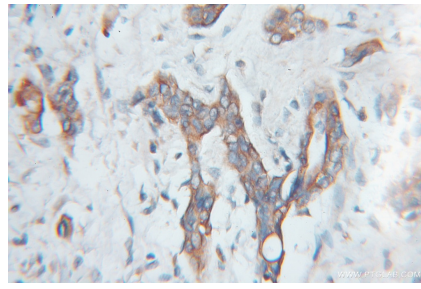
For technical support and original validation data for this product please contact:
T: 1 (888) 4PTGLAB (1-888-478-4522) (toll free in USA), or 1(312) 455-8498 (outside USA)
E: proteintech@ptglab.com
W: ptglab.com

This product is exclusively available under Proteintech Group brand and is not available to purchase from any other manufacturer.

Selected Validation Data



Various lysates were subjected to SDS PAGE followed by western blot with 11489-1-AP (SCMH1 antibody) at dilution of 1:600 incubated at room temperature for 1.5 hours.



Immunohistochemical analysis of paraffin-embedded human pancreas cancer using 11489-1-AP (SCMH1 antibody) at dilution of 1:100 (under 10x lens).