

For Research Use Only

Apelin Polyclonal antibody

Catalog Number: 11497-1-AP

12 Publications



Basic Information

Catalog Number: 11497-1-AP	GenBank Accession Number: BC021104	Purification Method: Antigen affinity purification
Size: 150ul , Concentration: 300 ug/ml by Nanodrop;	GeneID (NCBI): 8862	Recommended Dilutions: IHC: 1:50-1:500
Source: Rabbit	UNIPROT ID: Q9ULZ1	IF-P: 1:50-1:500
Isotype: IgG	Full Name: apelin	IF/ICC: 1:50-1:500
Immunogen Catalog Number: AG2047	Calculated MW: 77 aa, 9 kDa	

Applications

Tested Applications: IHC, IF/ICC, IF-P, ELISA	Positive Controls:
Cited Applications: IHC, IF	IHC : human colon cancer tissue, mouse heart tissue, mouse brain tissue, rat heart tissue
Species Specificity: human, mouse, rat	IF-P : human placenta tissue, mouse brain tissue
Cited Species: human, mouse, rat	IF/ICC : HepG2 cells,
Note-IHC: suggested antigen retrieval with TE buffer pH 9.0; (*) Alternatively, antigen retrieval may be performed with citrate buffer pH 6.0	

Background Information

Apelin, isolated from bovine stomach tissue extracts, is recognized as the endogenous ligand of the angiotensin-like-receptor 1 (APJ), and the human orphan G-protein-coupled receptor. Apelin is widely expressed in various organs such as the heart, lung, kidney, liver, adipose tissue, gastrointestinal tract, brain, adrenal glands, endothelium, and human plasma. Apelin has been found to be a potent stimulator of cardiac contractility and may function in the regulation of the cardiovascular system. Apelin is also known to be involved in the maintenance of INS sensitivity and play an important role in liver disease.

Notable Publications

Author	Pubmed ID	Journal	Application
Song Ah Chae	36189989	Am J Physiol Regul Integr Comp Physiol	
Jun Seok Son	35081489	EBioMedicine	
Zhi-Yong Xiao	29432881	Neuroscience	

Storage

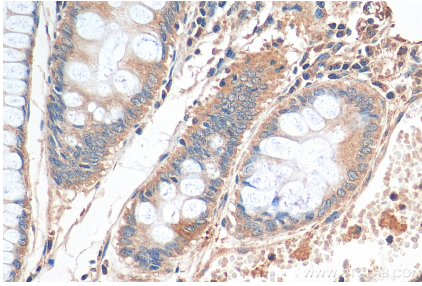
Storage:
Store at -20°C. Stable for one year after shipment.
Storage Buffer:
PBS with 0.02% sodium azide and 50% glycerol, pH7.3
Aliquoting is unnecessary for -20°C storage

*** 20ul sizes contain 0.1% BSA

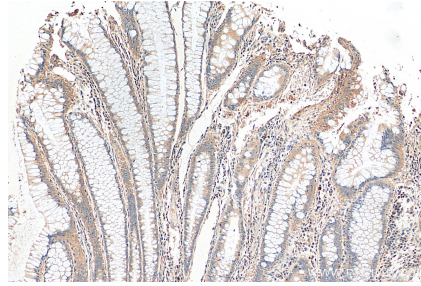
For technical support and original validation data for this product please contact:
T: 1 (888) 4PTGLAB (1-888-478-4522) (toll free in USA), or 1(312) 455-8498 (outside USA)
E: proteintech@ptglab.com
W: ptglab.com

This product is exclusively available under Proteintech Group brand and is not available to purchase from any other manufacturer.

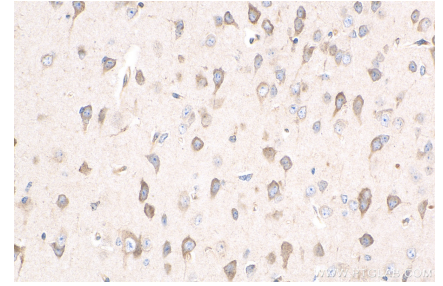
Selected Validation Data



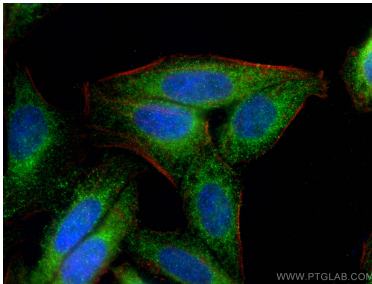
Immunohistochemical analysis of paraffin-embedded human colon cancer tissue slide using 11497-1-AP (Apelin antibody) at dilution of 1:200 (under 40x lens). Heat mediated antigen retrieval with Tris-EDTA buffer (pH 9.0).



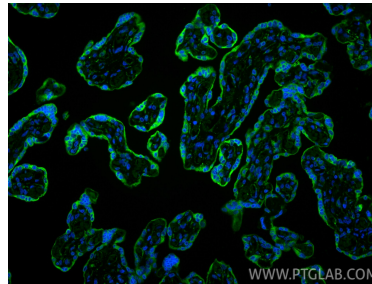
Immunohistochemical analysis of paraffin-embedded human colon cancer tissue slide using 11497-1-AP (Apelin antibody) at dilution of 1:200 (under 10x lens). Heat mediated antigen retrieval with Tris-EDTA buffer (pH 9.0).



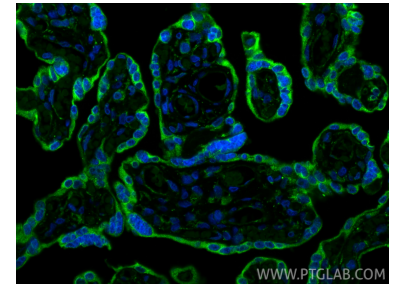
Immunohistochemical analysis of paraffin-embedded mouse brain tissue slide using 11497-1-AP (Apelin antibody) at dilution of 1:200 (under 40x lens). Heat mediated antigen retrieval with Tris-EDTA buffer (pH 9.0).



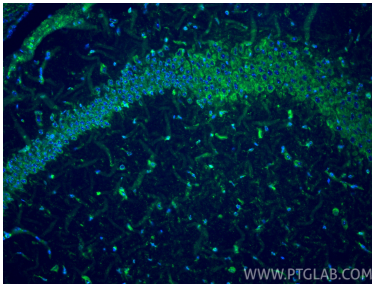
Immunofluorescent analysis of (4% PFA) fixed HepG2 cells using Apelin antibody (11497-1-AP) at dilution of 1:200 and CoraLite®488-Conjugated AffiniPure Goat Anti-Rabbit IgG(H+L), CL594-phalloidin (red).



Immunofluorescent analysis of (4% PFA) fixed paraffin-embedded human placenta tissue using Apelin antibody (11497-1-AP) at dilution of 1:200 and CoraLite®488-Conjugated Goat Anti-Rabbit IgG(H+L) (SA00013-2). Heat mediated antigen retrieval with Tris-EDTA buffer (pH 9.0).



Immunofluorescent analysis of (4% PFA) fixed paraffin-embedded human placenta tissue using Apelin antibody (11497-1-AP) at dilution of 1:200 and CoraLite®488-Conjugated Goat Anti-Rabbit IgG(H+L) (SA00013-2). Heat mediated antigen retrieval with Tris-EDTA buffer (pH 9.0).



Immunofluorescent analysis of (4% PFA) fixed paraffin-embedded mouse brain tissue using Apelin antibody (11497-1-AP) at dilution of 1:200 and CoraLite®488-Conjugated Goat Anti-Rabbit IgG(H+L) (SA00013-2). Heat mediated antigen retrieval with Tris-EDTA buffer (pH 9.0).