

For Research Use Only

ASGR2 Polyclonal antibody, PBS Only

Catalog Number:11501-2-PBS



Basic Information

Catalog Number: 11501-2-PBS	GenBank Accession Number: BC017251	Purification Method: Antigen affinity purification
Size: 100ug, Concentration: 1 mg/ml by Nanodrop;	GeneID (NCBI): 433	
Source: Rabbit	UNIPROT ID: P07307	
Isotype: IgG	Full Name: asialoglycoprotein receptor 2	
Immunogen Catalog Number: AG2037	Calculated MW: 39 kDa	
	Observed MW: 35 kDa, 40-50 kDa	

Applications

Tested Applications:
WB, IHC, FC, IP, Indirect ELISA

Species Specificity:
human

Background Information

Asialoglycoprotein receptor (ASGPR), also known as the hepatic galactose/N-acetylglucosamine (GlcNAc) receptor or Ashwell receptor, is a C-type lectin expressed exclusively in hepatic parenchymal cells. ASGPR consists of two subunits, a major subunit (ASGR1, HL-1) and a minor subunit (ASGR2, HL-2), and specifically recognizes terminal β -linked galactose or GlcNAc on circulating glycoproteins or cells. This receptor plays a critical role in serum glycoprotein homeostasis by mediating the endocytosis and lysosomal degradation of glycoproteins that contain terminal galactose or GlcNAc residues. ASGPR may facilitate hepatic infection by multiple viruses including hepatitis B, and is also a target for liver-specific drug delivery.

Storage

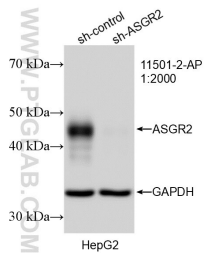
Storage:
Store at -80°C.

Storage Buffer:
PBS only, pH7.3

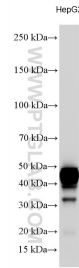
For technical support and original validation data for this product please contact:
T: 1 (888) 4PTGLAB (1-888-478-4522) (toll free in USA), or 1(312) 455-8498 (outside USA) E: proteintech@ptglab.com W: ptglab.com

This product is exclusively available under Proteintech Group brand and is not available to purchase from any other manufacturer.

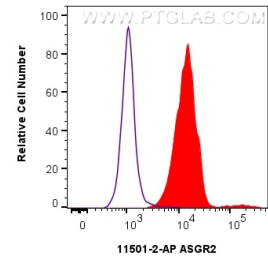
Selected Validation Data



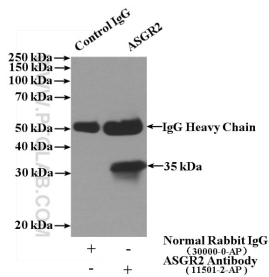
WB result of ASGR2 antibody (11501-2-AP; 1:2000; incubated at room temperature for 1.5 hours) with sh-Control and sh-ASGR2 transfected HepG2 cells. This data was developed using the same antibody clone with 11501-2-PBS in a different storage buffer formulation.



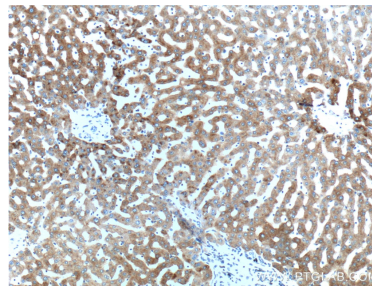
HepG2 cells were subjected to SDS PAGE followed by western blot with 11501-2-AP (ASGR2 antibody) at dilution of 1:1000 incubated at room temperature for 1.5 hours. This data was developed using the same antibody clone with 11501-2-PBS in a different storage buffer formulation.



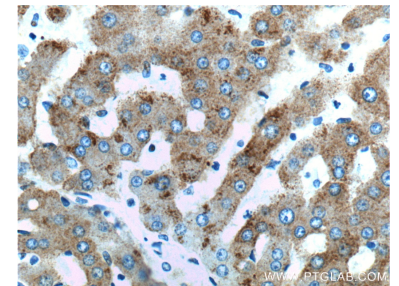
1×10^6 HepG2 cells were surface stained with 0.25 ug ASGR2 Polyclonal antibody (11501-2-AP) and CoraLite@488-Conjugated Goat Anti-Rabbit IgG(H+L) (SA00013-2)(red), or 0.25 ug rabbit IgG isotype control (blue). Cells were not fixed. This data was developed using the same antibody clone with 11501-2-PBS in a different storage buffer formulation.



IP result of anti-ASGR2 (IP:11501-2-AP, 4ug; Detection:11501-2-AP 1:300) with L02 cells lysate 1800ug. This data was developed using the same antibody clone with 11501-2-PBS in a different storage buffer formulation.



Immunohistochemical analysis of paraffin-embedded human liver tissue slide using 11501-2-AP (ASGR2 Antibody) at dilution of 1:200 (under 10x lens). This data was developed using the same antibody clone with 11501-2-PBS in a different storage buffer formulation.



Immunohistochemical analysis of paraffin-embedded human liver tissue slide using 11501-2-AP (ASGR2 Antibody) at dilution of 1:200 (under 40x lens). This data was developed using the same antibody clone with 11501-2-PBS in a different storage buffer formulation.