

For Research Use Only

CNN3 Polyclonal antibody

Catalog Number: 11509-1-AP

Featured Product

3 Publications



Basic Information

Catalog Number:
11509-1-AP

Size:
150ul, Concentration: 200 µg/ml by Nanodrop and 173 µg/ml by Bradford method using BSA as the standard;

Source:
Rabbit

Isotype:
IgG

Immunogen Catalog Number:
AG2068

GenBank Accession Number:
BC025372

GeneID (NCBI):
1266

Full Name:
calponin 3, acidic

Calculated MW:
329 aa, 36 kDa

Observed MW:
36 kDa

Purification Method:
Antigen affinity purification

Recommended Dilutions:
WB 1:1000-1:6000
IP 0.5-4.0 µg for 1.0-3.0 mg of total protein lysate
IHC 1:50-1:500
IF 1:10-1:100

Applications

Tested Applications:
IF, IHC, IP, WB, ELISA

Cited Applications:
IF, WB

Species Specificity:
human, mouse, rat

Cited Species:
human, mouse

Note-IHC: suggested antigen retrieval with TE buffer pH 9.0; (*) Alternatively, antigen retrieval may be performed with citrate buffer pH 6.0

Positive Controls:

WB: HCT 116 cells, HAP1 cells, human kidney tissue, human skeletal muscle tissue, HEK-293 cells, HepG2 cells, NIH/3T3 cells

IP: HEK-293 cells, U-87MG cells

IHC: human prostate cancer tissue, human skin tissue, human hysteryomyoma tissue, human stomach cancer tissue

IF: HeLa cells,

Background Information

Notable Publications

Author	Pubmed ID	Journal	Application
Taha A Jan	34260939	Cell Rep	IF
Keun-Seok Hong	30911294	Gastroenterol Res Pract	WB
Pei-Shan Wu	37976471	J Proteome Res	WB

Storage

Storage:

Store at -20°C. Stable for one year after shipment.

Storage Buffer:

PBS with 0.02% sodium azide and 50% glycerol pH 7.3.

Aliquoting is unnecessary for -20°C storage

*** 20ul sizes contain 0.1% BSA

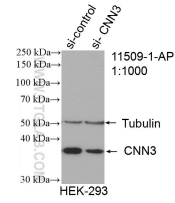
For technical support and original validation data for this product please contact:

T: 1 (888) 4PTGLAB (1-888-478-4522) (toll free in USA), or 1(312) 455-8498 (outside USA)

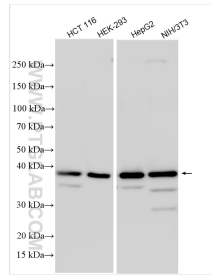
E: proteintech@ptglab.com
W: ptglab.com

This product is exclusively available under Proteintech Group brand and is not available to purchase from any other manufacturer.

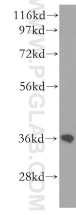
Selected Validation Data



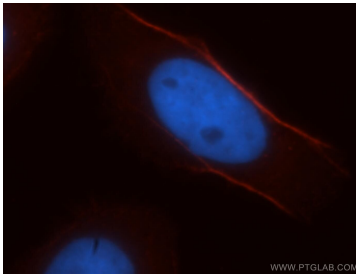
WB result of CNN3 antibody (11509-1-AP; 1:1000; incubated at room temperature for 1.5 hours) with sh-Control and sh-CNN3 transfected HEK-293 cells.



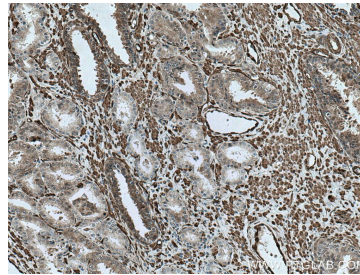
Various lysates were subjected to SDS PAGE followed by western blot with 11509-1-AP (CNN3 antibody) at dilution of 1:3000 incubated at room temperature for 1.5 hours.



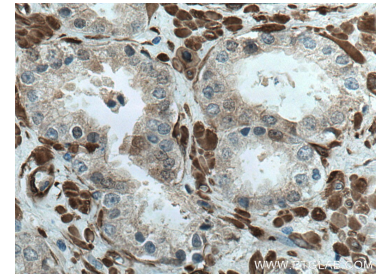
human kidney tissue were subjected to SDS PAGE followed by western blot with 11509-1-AP (CNN3 antibody) at dilution of 1:500 incubated at room temperature for 1.5 hours.



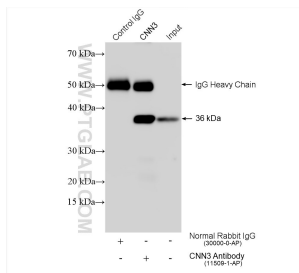
Immunofluorescent analysis of HeLa cells, using CNN3 antibody 11509-1-AP at 1:25 dilution and Rhodamine-labeled goat anti-rabbit IgG (red). Blue pseudocolor = DAPI (fluorescent DNA dye).



Immunohistochemical analysis of paraffin-embedded human prostate cancer tissue slide using 11509-1-AP (CNN3 antibody) at dilution of 1:200 (under 10x lens). Heat mediated antigen retrieval with Tris-EDTA buffer (pH 9.0).



Immunohistochemical analysis of paraffin-embedded human prostate cancer tissue slide using 11509-1-AP (CNN3 antibody) at dilution of 1:200 (under 40x lens). Heat mediated antigen retrieval with Tris-EDTA buffer (pH 9.0).



IP result of anti-CNN3(IP:11509-1-AP, 4ug; Detection:11509-1-AP 1:15000) with HEK-293 cells lysate 960 ug.