

For Research Use Only

YME1L1 Polyclonal antibody, PBS Only

Catalog Number: 11510-1-PBS

Featured Product



Basic Information

Catalog Number:

11510-1-PBS

Size:

100ug, Concentration: 1 mg/ml by Nanodrop;

Source:

Rabbit

Isotype:

IgG

Immunogen Catalog Number:

AG2069

GenBank Accession Number:

BC023507

GeneID (NCBI):

10730

UNIPROT ID:

Q96TA2

Full Name:

YME1-like 1 (*S. cerevisiae*)

Calculated MW:

716 aa, 80 kDa

Observed MW:

63 kDa

Purification Method:

Antigen affinity purification

Applications

Tested Applications:

WB, IF/ICC, IP, Indirect ELISA

Species Specificity:

human, mouse, rat

Background Information

YME1L1(ATP-dependent zinc metalloprotease) is also named as FTSH1, YME1L, Meg-4, PAMP. YME1L1 plays a phylogenetically conserved role in mitochondrial protein metabolism. It also ensures cell proliferation, maintains normal cristae morphology and complex I respiration activity, promotes antiapoptotic activity and protects mitochondria from the accumulation of oxidatively damaged membrane proteins. YME1L1 can prevent mitochondrial DNA inserting into nuclear. It has 3 isoforms produced by alternative splicing with the molecular weight of 86 kDa, 80 kDa and 76 kDa. This protein can migrate with a molecular weight of about 55-63 kDa, which is the size of the mature YME1L1 protein(PMID:22252130; 22354088).

Storage

Storage:

Store at -80°C.

Storage Buffer:

PBS only, pH7.3

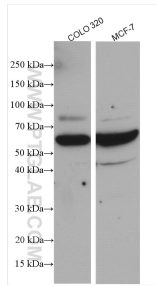
For technical support and original validation data for this product please contact:

T: 1 (888) 4PTGLAB (1-888-478-4522) (toll free in USA), or 1(312) 455-8498 (outside USA)

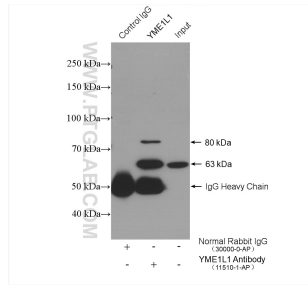
E: proteintech@ptglab.com
W: ptglab.com

This product is exclusively available under Proteintech Group brand and is not available to purchase from any other manufacturer.

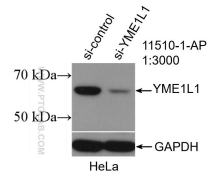
Selected Validation Data



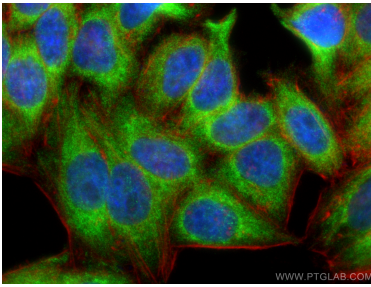
Various lysates were subjected to SDS PAGE followed by western blot with 11510-1-AP (YME1L1 antibody) at dilution of 1:1000 incubated at room temperature for 1.5 hours. This data was developed using the same antibody clone with 11510-1-PBS in a different storage buffer formulation.



IP result of anti-YME1L1 (IP:11510-1-AP, 4ug; Detection:11510-1-AP 1:500) with HeLa cells lysate 1280 ug. This data was developed using the same antibody clone with 11510-1-PBS in a different storage buffer formulation.



WB result of YME1L1 antibody (11510-1-AP; 1:3000; incubated at room temperature for 1.5 hours) with sh-Control and sh-YME1L1 transfected HeLa cells. This data was developed using the same antibody clone with 11510-1-PBS in a different storage buffer formulation.



Immunofluorescent analysis of (4% PFA) fixed HepG2 cells using YME1L1 antibody (11510-1-AP) at dilution of 1:400 and CoraLite@488-Conjugated AffiniPure Goat Anti-Rabbit IgG(H+L) (SA00013-2), CL594-Phalloidin (red). This data was developed using the same antibody clone with 11510-1-PBS in a different storage buffer formulation.