

For Research Use Only

# ABI1 Polyclonal antibody

Catalog Number: 11516-1-AP



## Basic Information

<b>Catalog Number:</b> 11516-1-AP	<b>GenBank Accession Number:</b> BC024254	<b>Purification Method:</b> Antigen affinity purification
<b>Size:</b> 150ul , Concentration: 533 µg/ml by Bradford method using BSA as the standard;	<b>GeneID (NCBI):</b> 10006	
<b>Source:</b> Rabbit	<b>Full Name:</b> abl-interactor 1	
<b>Isotype:</b> IgG	<b>Calculated MW:</b> 507 aa, 55 kDa	
<b>Immunogen Catalog Number:</b> AG2077		

## Applications

**Tested Applications:**  
IF, ELISA

**Species Specificity:**  
human, mouse, rat

## Background Information

### Storage

**Storage:**  
Store at -20°C. Stable for one year after shipment.

**Storage Buffer:**  
PBS with 0.02% sodium azide and 50% glycerol pH 7.3.

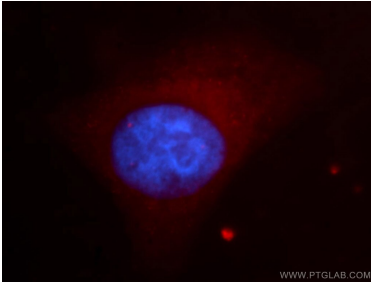
Aliquoting is unnecessary for -20°C storage

\*\*\* 20ul sizes contain 0.1% BSA

For technical support and original validation data for this product please contact:  
T: 1 (888) 4PTGLAB (1-888-478-4522) (toll free in USA), or 1(312) 455-8498 (outside USA)      E: proteintech@ptglab.com  
W: ptglab.com

This product is exclusively available under Proteintech Group brand and is not available to purchase from any other manufacturer.

## Selected Validation Data



Immunofluorescent analysis of HepG2 cells, using ABL1 antibody 11516-1-AP at 1:100 dilution and PE-labeled goat anti-rabbit IgG (red). Blue pseudocolor = DAPI (fluorescent DNA dye).