

For Research Use Only

ECM1 Polyclonal antibody

Catalog Number: 11521-1-AP **21 Publications**



Basic Information

Catalog Number: 11521-1-AP	GenBank Accession Number: BC023505	Purification Method: Antigen affinity purification
Size: 150ul , Concentration: 300 µg/ml by Nanodrop and 187 µg/ml by Bradford method using BSA as the standard;	GeneID (NCBI): 1893	Recommended Dilutions: WB 1:500-1:2000 IHC 1:100-1:400 IF 1:50-1:500
Source: Rabbit	Full Name: extracellular matrix protein 1	
Isotype: IgG	Calculated MW: 540 aa, 61 kDa	
Immunogen Catalog Number: AG2084	Observed MW: 50-55 kDa	

Applications

Tested Applications:

IF, IHC, WB, ELISA

Cited Applications:

IF, IHC, WB

Species Specificity:

human, mouse, rat

Cited Species:

canine, human, mouse

Positive Controls:

WB: A549 cells, L02 cells, HepG2 cells, mouse liver tissue, mouse kidney tissue, MCF-7 cells, mouse pancreas tissue, rat pancreas tissue, A375 cells

IHC: human thyroid cancer tissue, human breast cancer tissue, human lung cancer tissue, human pancreas cancer tissue

IF: HepG2 cells,

Note-IHC: suggested antigen retrieval with TE buffer pH 9.0; (*) Alternatively, antigen retrieval may be performed with citrate buffer pH 6.0

Background Information

Extracellular matrix protein 1 (ECM1) is a glycoprotein involved in a number of biological processes such as bone formation, skin differentiation, cell proliferation, and promotes angiostasis. ECM1 is expressed in breast cancer and could participate in cell migration and angiogenesis. Pathologically, ECM1 contributes to the formation and metastasis of several types of cancer including breast, thyroid and hepatocellular cancers (PMID:21128013) It inhibits MMP9 proteolytic activity. ECM1 protein is a possible trigger for angiogenesis, tumor progression and malignancies (PMID:21497598).

Notable Publications

Author	Pubmed ID	Journal	Application
L Gan	29059156	Oncogene	IF
Jie Yang	34816866	Mol Omics	WB
Gregory Mazo	27818179	Dev Cell	

Storage

Storage:

Store at -20°C. Stable for one year after shipment.

Storage Buffer:

PBS with 0.02% sodium azide and 50% glycerol pH 7.3.

Aliquoting is unnecessary for -20°C storage

***** 20ul sizes contain 0.1% BSA**

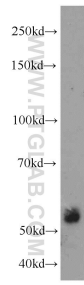
For technical support and original validation data for this product please contact:

T: 1 (888) 4PTGLAB (1-888-478-4522) (toll free in USA), or 1(312) 455-8498 (outside USA)

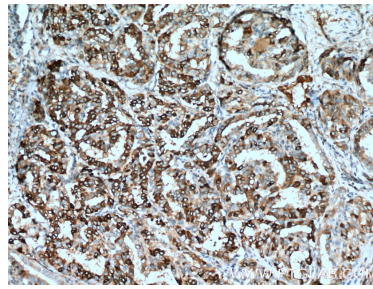
E: proteintech@ptglab.com
W: ptglab.com

This product is exclusively available under Proteintech Group brand and is not available to purchase from any other manufacturer.

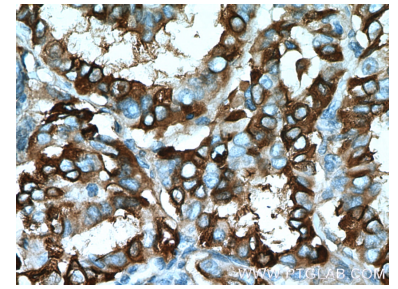
Selected Validation Data



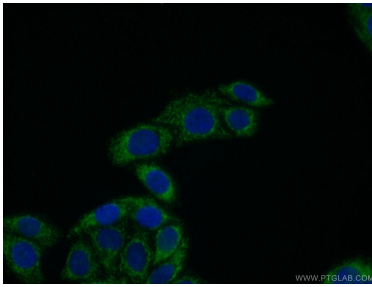
A549 cells were subjected to SDS PAGE followed by western blot with 11521-1-AP (ECM1 antibody) at dilution of 1:1500 incubated at room temperature for 1.5 hours.



Immunohistochemical analysis of paraffin-embedded human thyroid cancer tissue slide using 11521-1-AP (ECM1 Antibody) at dilution of 1:200 (under 10x lens). Heat mediated antigen retrieval with Tris-EDTA buffer (pH 9.0).



Immunohistochemical analysis of paraffin-embedded human thyroid cancer tissue slide using 11521-1-AP (ECM1 Antibody) at dilution of 1:200 (under 40x lens). Heat mediated antigen retrieval with Tris-EDTA buffer (pH 9.0).



Immunofluorescent analysis of (10% Formaldehyde) fixed HepG2 cells using 11521-1-AP (ECM1 antibody) at dilution of 1:50 and Alexa Fluor 488-conjugated AffiniPure Goat Anti-Rabbit IgG(H+L).