

For Research Use Only

# MEPCE Polyclonal antibody

Catalog Number: 11526-1-AP

Featured Product

4 Publications



## Basic Information

### Catalog Number:

11526-1-AP

### Size:

150ul, Concentration: 400 ug/ml by Nanodrop and 300 ug/ml by Bradford method using BSA as the standard;

### Source:

Rabbit

### Isotype:

IgG

### Immunogen Catalog Number:

AG2092

### GenBank Accession Number:

BC018935

### GeneID (NCBI):

56257

### UNIPROT ID:

Q7L2J0

### Full Name:

methylphosphate capping enzyme

### Calculated MW:

689 aa, 74 kDa

### Observed MW:

74 kDa

### Purification Method:

Antigen affinity purification

### Recommended Dilutions:

WB 1:500-1:1000

IHC 1:20-1:200

## Applications

### Tested Applications:

WB, IHC, ELISA

### Cited Applications:

WB, IP

### Species Specificity:

human

### Cited Species:

human, zebrafish

**Note-IHC: suggested antigen retrieval with TE buffer pH 9.0; (\*) Alternatively, antigen retrieval may be performed with citrate buffer pH 6.0**

### Positive Controls:

WB : HeLa cells, MCF-7 cells, K-562 cells

IHC : human colon cancer tissue,

## Background Information

MEPCE is a Component of the 75K snRNP complex, and a S-adenosyl-L-methionine-dependent methyltransferase that adds a methylphosphate cap at the 5'-end of 75K snRNA, which leads to its stabilization.

## Notable Publications

Author	Pubmed ID	Journal	Application
Eilebrecht Sebastian S	21957495	RNA Biol	WB
Kamaleldin E Elagib	24369834	Dev Cell	WB
Eilebrecht Sebastian S	21087998	Nucleic Acids Res	WB

## Storage

### Storage:

Store at -20°C. Stable for one year after shipment.

### Storage Buffer:

PBS with 0.02% sodium azide and 50% glycerol pH 7.3.

Aliquoting is unnecessary for -20°C storage

\*\*\* 20ul sizes contain 0.1% BSA

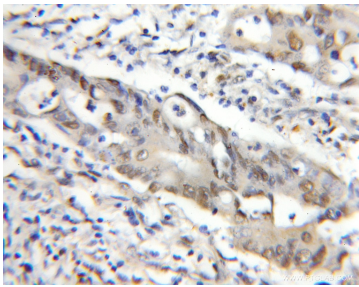
For technical support and original validation data for this product please contact:

T: 1 (888) 4PTGLAB (1-888-478-4522) (toll free in USA), or 1(312) 455-8498 (outside USA)

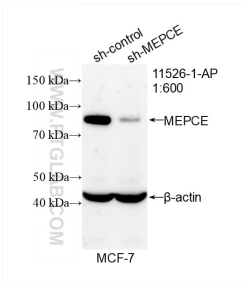
E: [proteintech@ptglab.com](mailto:proteintech@ptglab.com)  
W: [ptglab.com](http://ptglab.com)

This product is exclusively available under Proteintech Group brand and is not available to purchase from any other manufacturer.

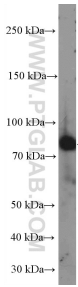
Selected Validation Data



Immunohistochemical analysis of paraffin-embedded human colon cancer using 11526-1-AP (MEPCE antibody) at dilution of 1:50 (under 10x lens).



WB result of MEPCE antibody (11526-1-AP; 1:600; incubated at room temperature for 1.5 hours) with sh-Control and sh-MEPCE transfected MCF-7 cells.



HeLa cells were subjected to SDS PAGE followed by western blot with 11526-1-AP (MEPCE Antibody) at dilution of 1:600 incubated at room temperature for 1.5 hours.