

For Research Use Only

ASCC2 Polyclonal antibody

Catalog Number: 11529-1-AP

3 Publications



Basic Information

Catalog Number: 11529-1-AP	GenBank Accession Number: BC025368	Purification Method: Antigen affinity purification
Size: 150ul, Concentration: 1200 µg/ml by Nanodrop;	GeneID (NCBI): 84164	Recommended Dilutions: WB 1:500-1:3000 IP 0.5-4.0 µg for 1.0-3.0 mg of total protein lysate IHC 1:20-1:200 IF 1:50-1:500
Source: Rabbit	Full Name: activating signal cointegrator 1 complex subunit 2	
Isotype: IgG	Calculated MW: 757 aa, 86 kDa	
Immunogen Catalog Number: AG2100	Observed MW: 90-100 kDa	

Applications

Tested Applications: FC, IF, IHC, IP, WB, ELISA	Positive Controls: WB : HEK-293T cells, human colon tissue, human brain tissue, HeLa cells, mouse colon tissue, mouse brain tissue, rat brain tissue IP : HeLa cells, IHC : human colon cancer tissue, IF : HepG2 cells,
Cited Applications: WB	
Species Specificity: human, mouse, rat	
Cited Species: human, mouse	
Note-IHC: suggested antigen retrieval with TE buffer pH 9.0; (*) Alternatively, antigen retrieval may be performed with citrate buffer pH 6.0	

Background Information

Notable Publications

Author	Pubmed ID	Journal	Application
Junqiao Jia	33139697	Nat Commun	WB
Wen-Jin Chen	37386638	Chin Med	WB
Junqiao Jia	37019967	Nat Commun	WB

Storage

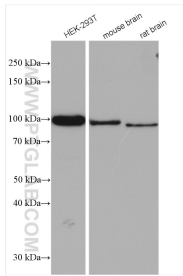
Storage:
Store at -20°C. Stable for one year after shipment.
Storage Buffer:
PBS with 0.02% sodium azide and 50% glycerol pH 7.3.
Aliquoting is unnecessary for -20°C storage

*** 20ul sizes contain 0.1% BSA

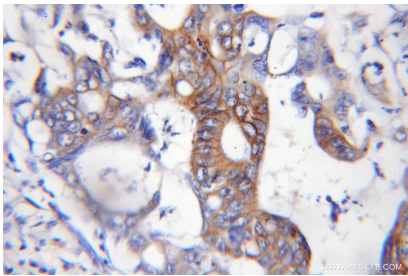
For technical support and original validation data for this product please contact:
T: 1 (888) 4PTGLAB (1-888-478-4522) (toll free in USA), or 1(312) 455-8498 (outside USA)
E: proteintech@ptglab.com
W: ptglab.com

This product is exclusively available under Proteintech Group brand and is not available to purchase from any other manufacturer.

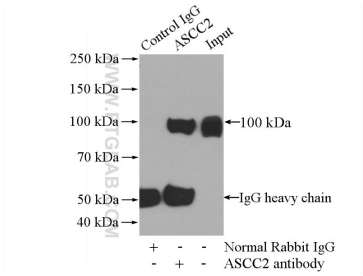
Selected Validation Data



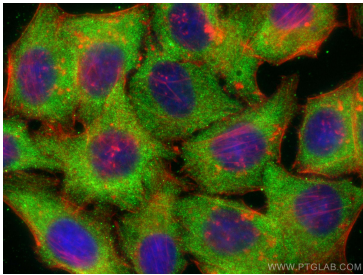
Various lysates were subjected to SDS PAGE followed by western blot with 11529-1-AP (ASCC2 antibody) at dilution of 1:1500 incubated at room temperature for 1.5 hours.



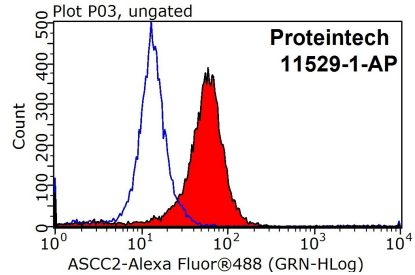
Immunohistochemical analysis of paraffin-embedded human colon cancer using 11529-1-AP (ASCC2 antibody) at dilution of 1:100 (under 10x lens).



IP Result of anti-ASCC2 (IP:11529-1-AP, 4ug; Detection:11529-1-AP 1:1000) with HeLa cells lysate 2640ug.



Immunofluorescent analysis of (-20°C Ethanol) fixed HepG2 cells using ASCC2 antibody (11529-1-AP) at dilution of 1:200 and CoraLite@488-Conjugated AffiniPure Goat Anti-Rabbit IgG(H+L), CL594-phalloidin (red).



1X10^6 HepG2 cells were stained with 0.2ug ASCC2 antibody (11529-1-AP, red) and control antibody (blue). Fixed with 90% MeOH blocked with 3% BSA (30 min). Alexa Fluor 488-conjugated AffiniPure Goat Anti-Rabbit IgG(H+L) with dilution 1:1000.