

For Research Use Only

ASCC2 Polyclonal antibody, PBS Only

Catalog Number:11529-1-PBS



Basic Information

Catalog Number:

11529-1-PBS

Size:

100ug , Concentration: 1 mg/ml by Nanodrop;

Source:

Rabbit

Isotype:

IgG

Immunogen Catalog Number:

AG2100

GenBank Accession Number:

BC025368

GeneID (NCBI):

84164

UNIPROT ID:

Q9H1I8

Full Name:

activating signal cointegrator 1 complex subunit 2

Calculated MW:

757 aa, 86 kDa

Observed MW:

90-100 kDa

Purification Method:

Antigen affinity purification

Applications

Tested Applications:

WB, IHC, IF/ICC, FC (Intra), IP, Indirect ELISA

Species Specificity:

human, mouse, rat

Background Information

ASCC2, also known as ASC1p100, is a subunit of the activating signal cointegrator 1 complex. ASCC2 plays a role in DNA damage repair as a component of the ASCC complex, recruiting ASCC3 and ALKBH3 to sites of DNA damage by binding to polyubiquitinated proteins that have 'Lys-63'-linked polyubiquitin chains. Additionally, it is part of the ASC-1 complex that enhances NF-kappa-B, SRF, and AP1 transactivation(PMID: 29144457, 12077347).

Storage

Storage:

Store at -80°C.

Storage Buffer:

PBS only, pH7.3

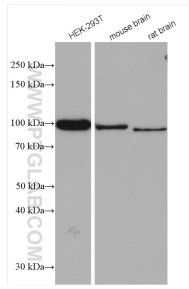
For technical support and original validation data for this product please contact:

T: 1 (888) 4PTGLAB (1-888-478-4522) (toll free in USA), or 1(312) 455-8498 (outside USA)

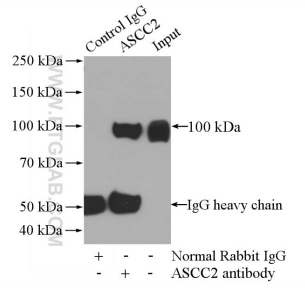
E: proteintech@ptglab.com
W: ptglab.com

This product is exclusively available under Proteintech Group brand and is not available to purchase from any other manufacturer.

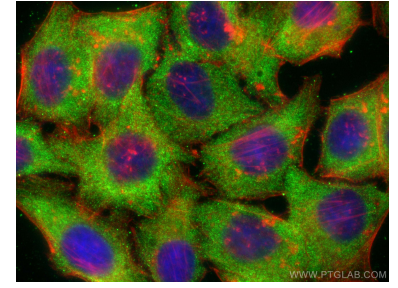
Selected Validation Data



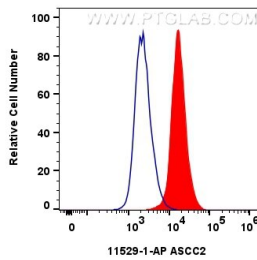
Various lysates were subjected to SDS PAGE followed by western blot with 11529-1-AP (ASCC2 antibody) at dilution of 1:1500 incubated at room temperature for 1.5 hours. This data was developed using the same antibody clone with 11529-1-PBS in a different storage buffer formulation.



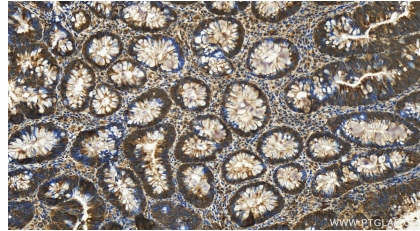
IP result of anti-ASCC2 (IP:11529-1-AP, 4ug; Detection:11529-1-AP 1:1000) with HeLa cells lysate 2640ug. This data was developed using the same antibody clone with 11529-1-PBS in a different storage buffer formulation.



Immunofluorescent analysis of (-20°C Ethanol) fixed HepG2 cells using ASCC2 antibody (11529-1-AP) at dilution of 1:200 and CoraLite@488-Conjugated AffiniPure Goat Anti-Rabbit IgG(H+L), CL594-phalloidin (red). This data was developed using the same antibody clone with 11529-1-PBS in a different storage buffer formulation.



1×10^6 HepG2 cells were intracellularly stained with 0.4 ug ASCC2 Polyclonal antibody (11529-1-AP)(red), or 0.4 ug Rabbit IgG control Rabbit PolyAb (30000-0-AP) (blue). Cells were fixed with 4% PFA and permeabilized with Flow Cytometry Perm Buffer (PF00011-C). This data was developed using the same antibody clone with 11529-1-PBS in a different storage buffer formulation.



Immunohistochemical analysis of paraffin-embedded human colon cancer tissue slide using 11529-1-AP (ASCC2 antibody) at dilution of 1:200 (under 20x lens). Heat mediated antigen retrieval with Tris-EDTA buffer (pH 9.0). This data was developed using the same antibody clone with 11529-1-PBS in a different storage buffer formulation.