

For Research Use Only

Osteoprotegerin Polyclonal antibody



Catalog Number: 11534-1-AP

1 Publications

Basic Information

Catalog Number: 11534-1-AP	GenBank Accession Number: BC030155	Purification Method: Antigen affinity purification
Size: 150ul , Concentration: 140 µg/ml by Nanodrop;	GeneID (NCBI): 4982	Recommended Dilutions: WB 1:500-1:1000
Source: Rabbit	Full Name: tumor necrosis factor receptor superfamily, member 11b	
Isotype: IgG	Calculated MW: 401 aa, 46 kDa	
Immunogen Catalog Number: AG2139	Observed MW: 56 kDa	

Applications

Tested Applications: WB, ELISA	Positive Controls: WB : human milk,
Cited Applications: WB	
Species Specificity: human	
Cited Species: human	

Background Information

Osteoprotegerin (OPG), also known as tumor necrosis factor receptor superfamily member 11B (TNFRSF11B) and osteoclastogenesis inhibitory factor (OCIF), belongs to the tumor necrosis factor (TNF) receptor superfamily. By binding to RANKL, OPG inhibits osteoclastic activity and promoting bone formation. OPG plays a key role on cell survival by inhibiting TRAIL-induced apoptosis. OPG also is involved in vascular biology, fibrosis, immunity, EMT, and the apoptosis of cancer cells (PMID: 35523775).

Notable Publications

Author	Pubmed ID	Journal	Application
Pei-Long Liu	37197158	Anal Cell Pathol (Amst)	WB

Storage

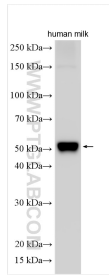
Storage:
Store at -20°C. Stable for one year after shipment.
Storage Buffer:
PBS with 0.02% sodium azide and 50% glycerol pH 7.3.
Aliquoting is unnecessary for -20°C storage

*** 20ul sizes contain 0.1% BSA

For technical support and original validation data for this product please contact:
T: 1 (888) 4PTGLAB (1-888-478-4522) (toll free in USA), or 1(312) 455-8498 (outside USA)
E: proteintech@ptglab.com
W: ptglab.com

This product is exclusively available under Proteintech Group brand and is not available to purchase from any other manufacturer.

Selected Validation Data



human milk was subjected to SDS PAGE followed by western blot with 11534-1-AP (Osteoprotegerin antibody) at dilution of 1:500 incubated at room temperature for 1.5 hours.