

For Research Use Only

DCI Polyclonal antibody

Catalog Number: 11535-1-AP



Basic Information

Catalog Number: 11535-1-AP	GenBank Accession Number: BC020228	Purification Method: Antigen affinity purification
Size: 150ul , Concentration: 150 µg/ml by Nanodrop and 150 µg/ml by Bradford method using BSA as the standard;	GeneID (NCBI): 1632	Recommended Dilutions: WB 1:1000-1:8000 IHC 1:20-1:200 IF 1:10-1:100
Source: Rabbit	Full Name: dodecenoyl-Coenzyme A delta isomerase (3,2 trans-enoyl-Coenzyme A isomerase)	
Isotype: IgG	Calculated MW: 302 aa, 33 kDa	
Immunogen Catalog Number: AG2094	Observed MW: 31 kDa	

Applications

Tested Applications:

IF, IHC, WB, ELISA

Species Specificity:

human, mouse, rat

Note-IHC: suggested antigen retrieval with TE buffer pH 9.0; (*) Alternatively, antigen retrieval may be performed with citrate buffer pH 6.0

Positive Controls:

WB : HEK-293 cells, human lung tissue, human brain tissue, human kidney tissue, BxPC-3 cells, COLO 320 cells

IHC : human prostate cancer tissue,

IF : BxPC-3 cells,

Background Information

EC11(enoyl-CoA delta isomerase 1, mitochondrial) is also named as DCI(dodecenoyl-CoA isomerase) and belongs to the enoyl-CoA hydratase/isomerase family. It is able to isomerize both 3-cis and 3-trans double bonds into the 2-trans form in a range of enoyl-CoA species. The full length protein has a transit peptide and 2 isoforms produced by alternative splicing and can exist as a homotrimer(PMID:15351645).

Storage

Storage:

Store at -20°C. Stable for one year after shipment.

Storage Buffer:

PBS with 0.02% sodium azide and 50% glycerol pH 7.3.

Aliquoting is unnecessary for -20°C storage

*** 20ul sizes contain 0.1% BSA

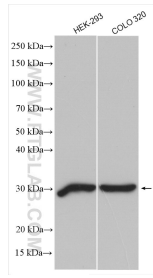
For technical support and original validation data for this product please contact:

T: 1 (888) 4PTGLAB (1-888-478-4522) (toll free in USA), or 1(312) 455-8498 (outside USA)

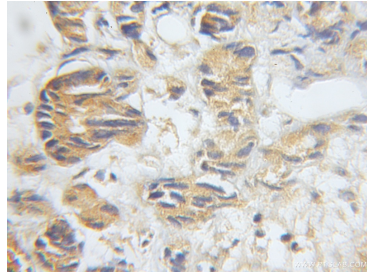
E: proteintech@ptglab.com
W: ptglab.com

This product is exclusively available under Proteintech Group brand and is not available to purchase from any other manufacturer.

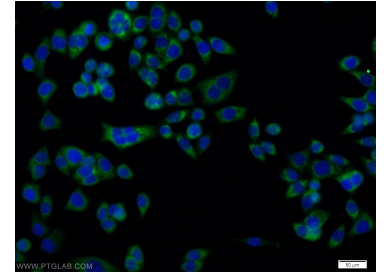
Selected Validation Data



Various lysates were subjected to SDS PAGE followed by western blot with 11535-1-AP (DCI antibody) at dilution of 1:4000 incubated at room temperature for 1.5 hours.



Immunohistochemical analysis of paraffin-embedded human prostate cancer using 11535-1-AP (DCI antibody) at dilution of 1:50 (under 10x lens).



Immunofluorescent analysis of BxPC-3 cells using 11535-1-AP (DCI antibody) at dilution of 1:25 and Alexa Fluor 488-conjugated AffiniPure Goat Anti-Rabbit IgG(H+L).