

For Research Use Only

LRRC8D Polyclonal antibody

Catalog Number: 11537-1-AP

2 Publications



Basic Information

Catalog Number:

11537-1-AP

Size:

150ul, Concentration: 550 ug/ml by Nanodrop and 333 ug/ml by Bradford method using BSA as the standard;

Source:

Rabbit

Isotype:

IgG

Immunogen Catalog Number:

AG2138

GenBank Accession Number:

BC024159

GeneID (NCBI):

55144

UNIPROT ID:

Q7L1W4

Full Name:

leucine rich repeat containing 8 family, member D

Calculated MW:

858 aa, 98 kDa

Observed MW:

98-120 kDa

Purification Method:

Antigen affinity purification

Recommended Dilutions:

WB 1:500-1:2000

IHC 1:50-1:500

IF/ICC 1:200-1:800

Applications

Tested Applications:

WB, IHC, IF/ICC, ELISA

Cited Applications:

WB, IHC

Species Specificity:

human, mouse, rat

Cited Species:

human

Note-IHC: suggested antigen retrieval with TE buffer pH 9.0; (*) Alternatively, antigen retrieval may be performed with citrate buffer pH 6.0

Positive Controls:

WB : mouse brain tissue, HEK-293 cells

IHC : human brain tissue,

IF/ICC : HeLa cells,

Background Information

LRRC8D (or LRRC5L) gene encodes a 98-kDa multi-pass membrane protein leucine-rich repeat-containing protein 8D, which contains 13 LRRs (leucine-rich repeats). The molecular function of this protein is so far not well understood. Recently, LRRC8D gene was found to be up-regulated after IL-2 deprivation in immortalised Interleukin-2(IL-2)-dependent human T cells, indicating a possible involvement of LRRC8D in cancer development. This LRRC8D antibody can't cross-recognize LRRC8A.

Notable Publications

Author	Pubmed ID	Journal	Application
Magdalena Jahn	33596608	Cell Physiol Biochem	IHC
Greta Pintacuda	36950384	Cell Genom	WB

Storage

Storage:

Store at -20°C. Stable for one year after shipment.

Storage Buffer:

PBS with 0.02% sodium azide and 50% glycerol pH 7.3.

Aliquoting is unnecessary for -20°C storage

*** 20ul sizes contain 0.1% BSA

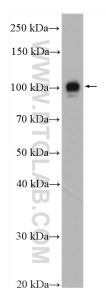
For technical support and original validation data for this product please contact:

T: 1 (888) 4PTGLAB (1-888-478-4522) (toll free in USA), or 1(312) 455-8498 (outside USA)

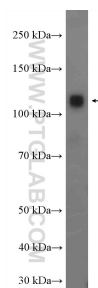
E: proteintech@ptglab.com
W: ptglab.com

This product is exclusively available under Proteintech Group brand and is not available to purchase from any other manufacturer.

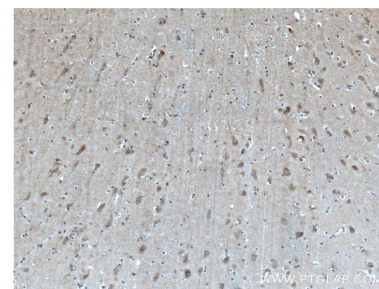
Selected Validation Data



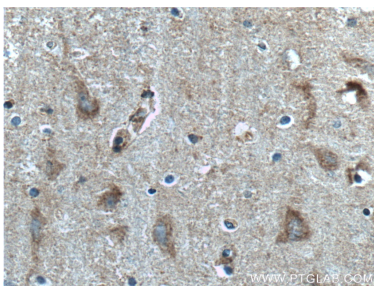
HEK-293 cells were subjected to SDS PAGE followed by western blot with 11537-1-AP (LRRC8D antibody) at dilution of 1:600 incubated at room temperature for 1.5 hours.



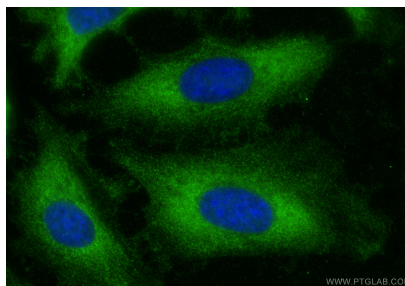
mouse brain tissue were subjected to SDS PAGE followed by western blot with 11537-1-AP (LRRC8D antibody) at dilution of 1:1000 incubated at room temperature for 1.5 hours.



Immunohistochemical analysis of paraffin-embedded human brain tissue slide using 11537-1-AP (LRRC8D antibody) at dilution of 1:200 (under 10x lens. Heat mediated antigen retrieval with Tris-EDTA buffer (pH 9.0).



Immunohistochemical analysis of paraffin-embedded human brain tissue slide using 11537-1-AP (LRRC8D antibody) at dilution of 1:200 (under 40x lens. Heat mediated antigen retrieval with Tris-EDTA buffer (pH 9.0).



Immunofluorescent analysis of (-20°C Ethanol) fixed HeLa cells using LRRC8D antibody (11537-1-AP) at dilution of 1:400 and CoraLite®488-Conjugated Goat Anti-Rabbit IgG(H+L) (SA00013-2).