

For Research Use Only

# PLAGL2 Polyclonal antibody

Catalog Number: 11540-1-AP

Featured Product

11 Publications



## Basic Information

<b>Catalog Number:</b> 11540-1-AP	<b>GenBank Accession Number:</b> BC023655	<b>Purification Method:</b> Antigen affinity purification
<b>Size:</b> 150ul , Concentration: 450 µg/ml by Nanodrop;	<b>GeneID (NCBI):</b> 5326	<b>Recommended Dilutions:</b> WB 1:1000-1:4000
<b>Source:</b> Rabbit	<b>Full Name:</b> pleiomorphic adenoma gene-like 2	
<b>Isotype:</b> IgG	<b>Calculated MW:</b> 496 aa, 55 kDa	
<b>Immunogen Catalog Number:</b> AG2137	<b>Observed MW:</b> 50-55 kDa, 70 kDa	

## Applications

<b>Tested Applications:</b> WB, ELISA	<b>Positive Controls:</b> WB : Raji cells, mouse kidney tissue
<b>Cited Applications:</b> ChIP, IF, IHC, IP, WB	
<b>Species Specificity:</b> human, mouse	
<b>Cited Species:</b> human, mouse	

## Background Information

PLAGL2, also named KIAA0198, belongs to the krueppel C2H2-type zinc-finger protein family. It shows weak transcriptional activatory activity. PLAGL2, a proto-oncogene, is implicated in a variety of cancers including acute myeloid leukemia (AML), malignant glioma, colon cancer, and lung adenocarcinoma. PLAGL2 can function as a tumor suppressor by initiating cell cycle arrest and apoptosis. The calculated molecular weight of PLAGL2 is 55 kDa, but the SUMO1-modified form is 68 kDa (PMID: 30535429).

## Notable Publications

Author	Pubmed ID	Journal	Application
Kari R. Fischer	36399309	Genes Genomics	WB,IF
Liang Wu	30822775	Pediatr Res	WB,IHC
Daojiang Li	31279780	EBioMedicine	WB,IHC,IF

## Storage

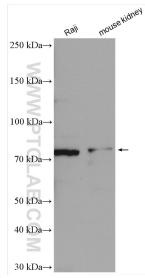
**Storage:**  
Store at -20°C. Stable for one year after shipment.  
**Storage Buffer:**  
PBS with 0.02% sodium azide and 50% glycerol pH 7.3.  
Aliquoting is unnecessary for -20°C storage

\*\*\* 20ul sizes contain 0.1% BSA

For technical support and original validation data for this product please contact:  
T: 1 (888) 4PTGLAB (1-888-478-4522) (toll free in USA), or 1(312) 455-8498 (outside USA)  
E: proteintech@ptglab.com  
W: ptglab.com

This product is exclusively available under Proteintech Group brand and is not available to purchase from any other manufacturer.

## Selected Validation Data



Various lysates were subjected to SDS PAGE followed by western blot with 11540-1-AP (PLAGL2 antibody) at dilution of 1:2000 incubated at room temperature for 1.5 hours.