

For Research Use Only

IgG Lambda Light Chain Polyclonal antibody

Catalog Number: 11541-1-AP



Basic Information

Catalog Number: 11541-1-AP	GenBank Accession Number: BC020233	Purification Method: Antigen affinity purification
Size: 150ul , Concentration: 500 ug/ml by Nanodrop;	GeneID (NCBI): 3535	Recommended Dilutions: WB 1:500-1:2000 IHC 1:50-1:500 IF-P 1:200-1:800
Source: Rabbit	Full Name: immunoglobulin lambda locus	
Isotype: IgG	Calculated MW: 237 aa, 25 kDa	
Immunogen Catalog Number: AG2064	Observed MW: 25 kDa	

Applications

Tested Applications: WB, IHC, IF-P, ELISA	Positive Controls:
Species Specificity: human	WB : human plasma tissue, human spleen tissue
Note-IHC: suggested antigen retrieval with TE buffer pH 9.0; (*) Alternatively, antigen retrieval may be performed with citrate buffer pH 6.0	IHC : human tonsillitis tissue,
	IF-P : human tonsillitis tissue,

Background Information

This antibody detects the lambda light chain of human IgG.

Storage

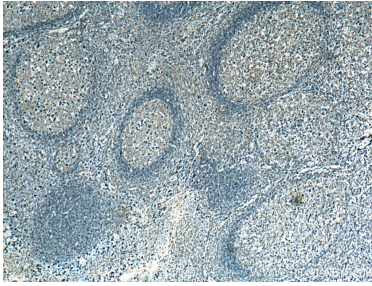
Storage:
Store at -20°C. Stable for one year after shipment.
Storage Buffer:
PBS with 0.02% sodium azide and 50% glycerol pH 7.3.
Aliquoting is unnecessary for -20°C storage

*** 20ul sizes contain 0.1% BSA

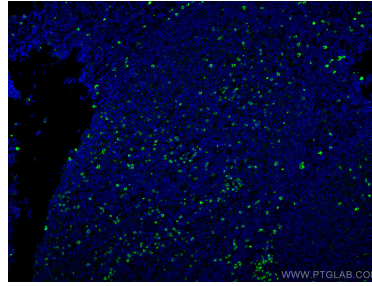
For technical support and original validation data for this product please contact:
T: 1 (888) 4PTGLAB (1-888-478-4522) (toll free in USA), or 1(312) 455-8498 (outside USA)
E: proteintech@ptglab.com
W: ptglab.com

This product is exclusively available under Proteintech Group brand and is not available to purchase from any other manufacturer.

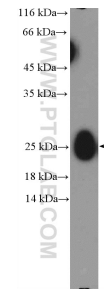
Selected Validation Data



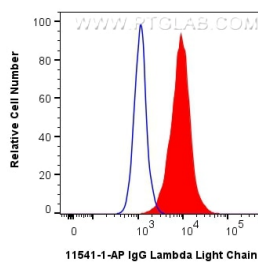
Immunohistochemical analysis of paraffin-embedded human tonsillitis tissue slide using 11541-1-AP (IgG Lambda Light Chain antibody) at dilution of 1:200 (under 4x lens). Heat mediated antigen retrieval with Tris-EDTA buffer (pH 9.0).



Immunofluorescent analysis of (4% PFA) fixed human tonsillitis tissue using IgG Lambda Light Chain antibody (11541-1-AP) at dilution of 1:400 and CoraLite®488-Conjugated AffiniPure Goat Anti-Rabbit IgG(H+L).



human plasma (0.3 ug) were subjected to SDS PAGE followed by western blot with 11541-1-AP (IgG light chain Antibody) at dilution of 1:1000 incubated at room temperature for 1.5 hours.



1x10⁶ Ramos cells were intracellularly stained with 0.4 ug IgG Lambda Light Chain Polyclonal antibody (11541-1-AP) and CoraLite®488-Conjugated Goat Anti-Rabbit IgG(H+L) (SA00013-2) (red), or 0.4 ug Rabbit IgG control Rabbit PolyAb (30000-O-AP) (blue). Cells were fixed with 4% PFA and permeabilized with Flow Cytometry Perm Buffer (PF00011-C).