

For Research Use Only

ORC5L Polyclonal antibody

Catalog Number: 11542-1-AP

2 Publications



Basic Information

Catalog Number:

11542-1-AP

Size:

150ul, Concentration: 233 ug/ml by Bradford method using BSA as the standard;

Source:

Rabbit

Isotype:

IgG

Immunogen Catalog Number:

AG2133

GenBank Accession Number:

BC023652

GeneID (NCBI):

5001

UNIPROT ID:

O43913

Full Name:

origin recognition complex, subunit 5-like (yeast)

Calculated MW:

435 aa, 50 kDa

Observed MW:

50 kDa

Purification Method:

Antigen affinity purification

Recommended Dilutions:

WB 1:500-1:1000

IHC 1:20-1:200

IF/ICC 1:50-1:500

Applications

Tested Applications:

WB, IHC, IF/ICC, ELISA

Cited Applications:

IHC

Species Specificity:

human, mouse, rat

Cited Species:

human

Note-IHC: suggested antigen retrieval with TE buffer pH 9.0; (*) Alternatively, antigen retrieval may be performed with citrate buffer pH 6.0

Positive Controls:

WB: mouse kidney tissue, human kidney tissue, mouse ovary tissue

IHC: human pancreas cancer tissue,

IF/ICC: HepG2 cells,

Background Information

Origin recognition complex (ORC) plays an essential role in the initiation of chromosome DNA replication and transcriptional silencing. ORC binds in an ATP-dependent manner to several well-defined autonomously replicating sequences that serve as the chromosomal replication origins. ORC5L is one of the 6 subunits of ORC.

Notable Publications

Author	Pubmed ID	Journal	Application
Min Tang	36205357	Cancer Med	IHC
Yushen Su	33732365	Oncol Lett	IHC

Storage

Storage:

Store at -20°C. Stable for one year after shipment.

Storage Buffer:

PBS with 0.02% sodium azide and 50% glycerol pH 7.3.

Aliquoting is unnecessary for -20°C storage

*** 20ul sizes contain 0.1% BSA

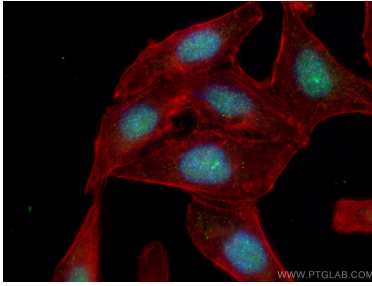
For technical support and original validation data for this product please contact:

T: 1 (888) 4PTGLAB (1-888-478-4522) (toll free in USA), or 1(312) 455-8498 (outside USA)

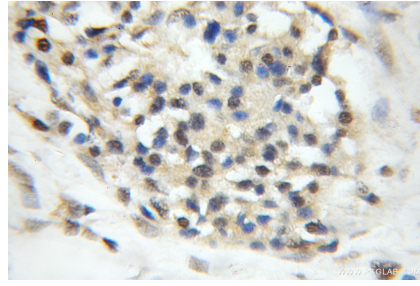
E: proteintech@ptglab.com
W: ptglab.com

This product is exclusively available under Proteintech Group brand and is not available to purchase from any other manufacturer.

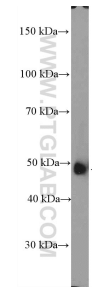
Selected Validation Data



Immunofluorescent analysis of (4% PFA) fixed HepG2 cells using 11542-1-AP (ORC5L antibody), at dilution of 1:200 and CoraLite®488-Conjugated Goat Anti-Rabbit IgG(H+L).



Immunohistochemical analysis of paraffin-embedded human pancreas cancer using 11542-1-AP (ORC5L antibody) at dilution of 1:50 (under 10x lens).



mouse kidney tissue were subjected to SDS PAGE followed by western blot with 11542-1-AP (ORC5L Antibody) at dilution of 1:600 incubated at room temperature for 1.5 hours.