

For Research Use Only

CAMKK2 Polyclonal antibody

Catalog Number: 11549-1-AP

Featured Product

50 Publications



Basic Information

Catalog Number:

11549-1-AP

Size:

150ul, Concentration: 650 ug/ml by Nanodrop;

Source:

Rabbit

Isotype:

IgG

Immunogen Catalog Number:

AG2093

GenBank Accession Number:

BC026060

GeneID (NCBI):

10645

UNIPROT ID:

Q96RR4

Full Name:

calcium/calmodulin-dependent protein kinase kinase 2, beta

Calculated MW:

588 aa, 60 kDa

Observed MW:

60-70 kDa

Purification Method:

Antigen affinity purification

Recommended Dilutions:

WB 1:500-1:2000

IP 0.5-4.0 ug for 1.0-3.0 mg of total protein lysate

IHC 1:100-1:400

IF/ICC 1:200-1:800

Applications

Tested Applications:

WB, IHC, IF/ICC, IP, ELISA

Cited Applications:

WB, IHC, IF, CoIP

Species Specificity:

human, mouse

Cited Species:

human, mouse, rat, pig, monkey, bovine

Note-IHC: suggested antigen retrieval with TE buffer pH 9.0; (*) Alternatively, antigen retrieval may be performed with citrate buffer pH 6.0

Positive Controls:

WB : Jurkat cells, fetal human brain tissue, HeLa cells, PC-3 cells, RAW 264.7 cells

IP : PC-3 cells,

IHC : human prostate cancer tissue,

IF/ICC : PC-3 cells,

Background Information

CAMKK2 (calcium/calmodulin-dependent protein kinase kinase 2) is also named as CAMKKB, KIAA0787 and belongs to the protein kinase superfamily. It regulates hypothalamic production of the orexigenic hormone NPY and contributes to the regulation of energy balance. CAMKK2 in vivo reduces tumor growth suggests that reactivation of CAMKK2 by development of new drugs may be a new strategy to prolong the period to respond androgen-deprivation therapy (ADT) (PMID:22549914). It can be autophosphorylated (PMID:19369195). It has 7 isoforms produced by alternative splicing.

Notable Publications

Author	Pubmed ID	Journal	Application
Yingying Zheng	34738030	Anim Nutr	WB
Mengqiu Yuan	34472622	EMBO J	WB
Siqi Ma	36341814	J Ethnopharmacol	WB, IF

Storage

Storage:

Store at -20°C. Stable for one year after shipment.

Storage Buffer:

PBS with 0.02% sodium azide and 50% glycerol pH 7.3.

Aliquoting is unnecessary for -20°C storage

*** 20ul sizes contain 0.1% BSA

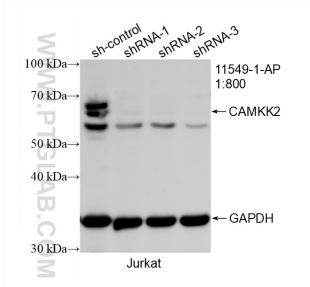
For technical support and original validation data for this product please contact:

T: 1 (888) 4PTGLAB (1-888-478-4522) (toll free in USA), or 1(312) 455-8498 (outside USA)

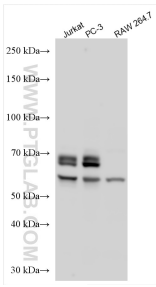
E: proteintech@ptglab.com
W: ptglab.com

This product is exclusively available under Proteintech Group brand and is not available to purchase from any other manufacturer.

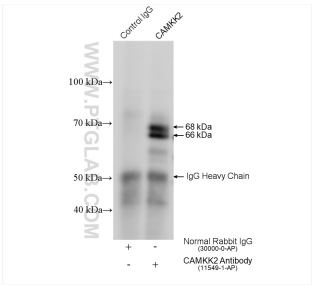
Selected Validation Data



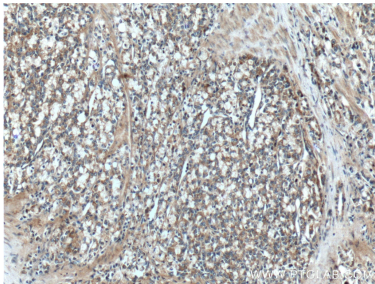
WB result of CAMKK2 antibody (11549-1-AP; 1:800; incubated at room temperature for 1.5 hours) with sh-Control and sh-CAMKK2 transfected Jurkat cells.



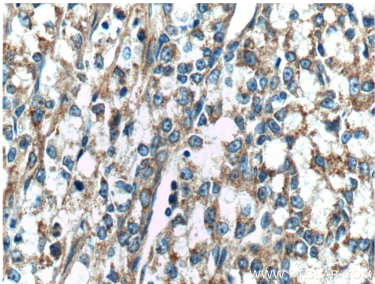
Various lysates were subjected to SDS PAGE followed by western blot with 11549-1-AP (CAMKK2 antibody) at dilution of 1:1000 incubated at room temperature for 1.5 hours.



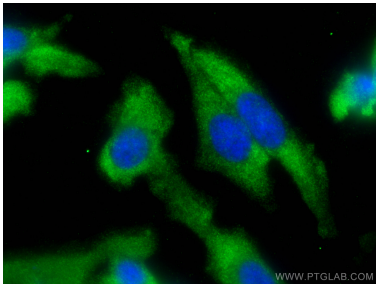
IP result of anti-CAMKK2 (IP:11549-1-AP, 4ug; Detection:11549-1-AP 1:500) with PC-3 cells lysate 960 ug.



Immunohistochemical analysis of paraffin-embedded human prostate cancer tissue slide using 11549-1-AP (CAMKK2 Antibody) at dilution of 1:200 (under 10x lens).



Immunohistochemical analysis of paraffin-embedded human prostate cancer tissue slide using 11549-1-AP (CAMKK2 Antibody) at dilution of 1:200 (under 40x lens).



Immunofluorescent analysis of (-20°C Ethanol) fixed PC-3 cells using CAMKK2 antibody (11549-1-AP) at dilution of 1:400 and CoraLite®488-Conjugated Goat Anti-Rabbit IgG(H+L).