

For Research Use Only

SLA/LP Polyclonal antibody

Catalog Number: 11551-1-AP

1 Publications



Basic Information

Catalog Number:

11551-1-AP

Size:

150ul, Concentration: 500 ug/ml by Nanodrop;

Source:

Rabbit

Isotype:

IgG

Immunogen Catalog Number:

AG2097

GenBank Accession Number:

BC023539

GeneID (NCBI):

51091

UNIPROT ID:

Q9HD40

Full Name:

Sep (O-phosphoserine) tRNA:Sec (selenocysteine) tRNA synthase

Calculated MW:

501 aa, 56 kDa

Observed MW:

56 kDa

Purification Method:

Antigen affinity purification

Recommended Dilutions:

WB 1:500-1:1000

IP 0.5-4.0 ug for 1.0-3.0 mg of total protein lysate

IHC 1:50-1:500

Applications

Tested Applications:

WB, IHC, IP, ELISA

Cited Applications:

WB

Species Specificity:

human, mouse, rat

Cited Species:

human

Note-IHC: suggested antigen retrieval with TE buffer pH 9.0; (*) Alternatively, antigen retrieval may be performed with citrate buffer pH 6.0

Positive Controls:

WB : mouse liver tissue,

IP : mouse liver tissue,

IHC : human stomach tissue,

Notable Publications

Author	Pubmed ID	Journal	Application
Stefanie Jäger	22190034	Nature	WB

Storage

Storage:

Store at -20°C. Stable for one year after shipment.

Storage Buffer:

PBS with 0.02% sodium azide and 50% glycerol pH 7.3.

Aliquoting is unnecessary for -20°C storage

*** 20ul sizes contain 0.1% BSA

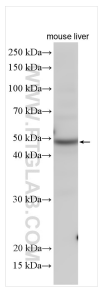
For technical support and original validation data for this product please contact:

T: 1 (888) 4PTGLAB (1-888-478-4522) (toll free in USA), or 1(312) 455-8498 (outside USA)

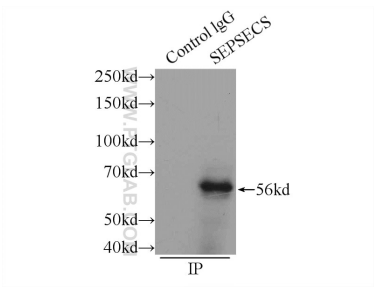
E: proteintech@ptglab.com
W: ptglab.com

This product is exclusively available under Proteintech Group brand and is not available to purchase from any other manufacturer.

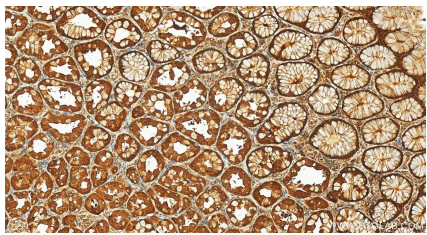
Selected Validation Data



mouse liver tissue were subjected to SDS PAGE followed by western blot with 11551-1-AP (SLA/LP antibody) at dilution of 1:800 incubated at room temperature for 1.5 hours.



IP result of anti-SLA/LP (IP:11551-1-AP, 3ug; Detection:11551-1-AP 1:800) with mouse liver tissue lysate 6000ug.



Immunohistochemical analysis of paraffin-embedded human stomach tissue slide using 11551-1-AP (SLA/LP antibody) at dilution of 1:200 (under 20x lens). Heat mediated antigen retrieval with Tris-EDTA buffer (pH 9.0).