

For Research Use Only

# SEPSECS Polyclonal antibody, PBS Only

Catalog Number: 11551-1-PBS



## Basic Information

Catalog Number:

11551-1-PBS

Size:

100ug, Concentration: 1 mg/ml by Nanodrop;

Source:

Rabbit

Isotype:

IgG

Immunogen Catalog Number:

AG2097

GenBank Accession Number:

BC023539

GeneID (NCBI):

51091

UNIPROT ID:

Q9HD40

Full Name:

Sep (O-phosphoserine) tRNA:Sec (selenocysteine) tRNA synthase

Calculated MW:

501 aa, 56 kDa

Observed MW:

56 kDa

Purification Method:

Antigen affinity purification

## Applications

Tested Applications:

WB, IHC, IP, Indirect ELISA

Species Specificity:

human, mouse, rat

## Storage

Storage:

Store at -80°C.

Storage Buffer:

PBS only, pH7.3

For technical support and original validation data for this product please contact:

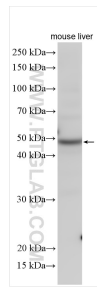
T: 1 (888) 4PTGLAB (1-888-478-4522) (toll free in USA), or 1(312) 455-8498 (outside USA)

E: [proteintech@ptglab.com](mailto:proteintech@ptglab.com)

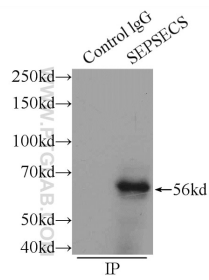
W: [ptglab.com](http://ptglab.com)

This product is exclusively available under Proteintech Group brand and is not available to purchase from any other manufacturer.

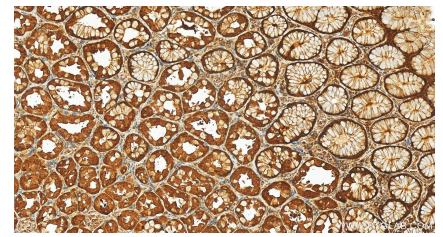
## Selected Validation Data



mouse liver tissue were subjected to SDS PAGE followed by western blot with 11551-1-AP (SEPSECS antibody) at dilution of 1:800 incubated at room temperature for 1.5 hours. This data was developed using the same antibody clone with 11551-1-PBS in a different storage buffer formulation.



IP result of anti-SEPSECS (IP:11551-1-AP, 3ug; Detection:11551-1-AP 1:800) with mouse liver tissue lysate 6000ug. This data was developed using the same antibody clone with 11551-1-PBS in a different storage buffer formulation.



Immunohistochemical analysis of paraffin-embedded human stomach tissue slide using 11551-1-AP (SEPSECS antibody) at dilution of 1:200 (under 20x lens). Heat mediated antigen retrieval with Tris-EDTA buffer (pH 9.0). This data was developed using the same antibody clone with 11551-1-PBS in a different storage buffer formulation.