

For Research Use Only

# CHRNA1 Polyclonal antibody

Catalog Number: 11553-1-AP **6 Publications**



## Basic Information

<b>Catalog Number:</b> 11553-1-AP	<b>GenBank Accession Number:</b> BC023553	<b>Purification Method:</b> Antigen affinity purification
<b>Size:</b> 150ul, Concentration: 400 µg/ml by Bradford method using BSA as the standard;	<b>GeneID (NCBI):</b> 1140	<b>Recommended Dilutions:</b> WB 1:500-1:1000 IP 0.5-4.0 ug for IP and 1:200-1:1000 for WB
<b>Source:</b> Rabbit	<b>Full Name:</b> cholinergic receptor, nicotinic, beta 1 (muscle)	<b>IHC 1:20-1:200</b>
<b>Isotype:</b> IgG	<b>Calculated MW:</b> 501 aa, 57 kDa	
<b>Immunogen Catalog Number:</b> AG2108	<b>Observed MW:</b> 50-57 kDa	

## Applications

<b>Tested Applications:</b> IHC, IP, WB, ELISA	<b>Positive Controls:</b>
<b>Cited Applications:</b> WB	<b>WB:</b> human liver tissue, mouse liver tissue
<b>Species Specificity:</b> human, mouse, rat	<b>IP:</b> mouse liver tissue,
<b>Cited Species:</b> mouse	<b>IHC:</b> human colon cancer tissue,

**Note-IHC: suggested antigen retrieval with TE buffer pH 9.0; (\*) Alternatively, antigen retrieval may be performed with citrate buffer pH 6.0**

## Background Information

Acetylcholine receptors (AChRs) are integral membrane proteins that respond to the binding of acetylcholine (ACh), a neurotransmitter synthesized, stored and finally released by cholinergic neurons. After binding acetylcholine, the AChR responds by an extensive change in conformation that affects all subunits and leads to opening of an ion-conducting channel across the plasma membrane. The muscle acetylcholine receptor is composed of five subunits: two alpha subunits and one each of the beta, delta, and gamma (in immature muscle) or epsilon (in mature muscle) subunits. CHRNA1 gene encodes acetylcholine receptor subunit beta (ACHRB). Mutations in this gene are associated with slow-channel congenital myasthenic syndrome.

## Notable Publications

Author	Pubmed ID	Journal	Application
Zhidan Qi	36381585	Mol Ther Nucleic Acids	WB
Yinrui Guo	34045460	Transl Psychiatry	WB
Xiao Wu	33795529	Aging (Albany NY)	WB

## Storage

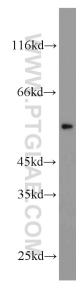
**Storage:**  
Store at -20°C. Stable for one year after shipment.  
**Storage Buffer:**  
PBS with 0.02% sodium azide and 50% glycerol pH 7.3.  
Aliquoting is unnecessary for -20°C storage

**\*\*\* 20ul sizes contain 0.1% BSA**

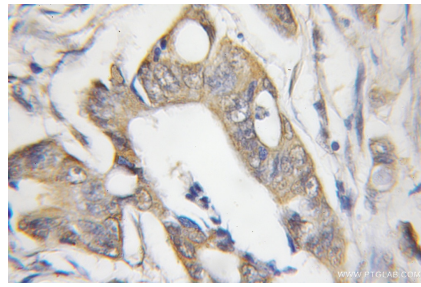
For technical support and original validation data for this product please contact:  
T: 1 (888) 4PTGLAB (1-888-478-4522) (toll free in USA), or 1(312) 455-8498 (outside USA)  
E: proteintech@ptglab.com  
W: ptglab.com

**This product is exclusively available under Proteintech Group brand and is not available to purchase from any other manufacturer.**

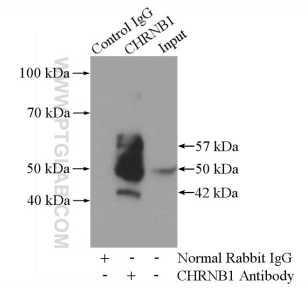
## Selected Validation Data



human liver tissue were subjected to SDS PAGE followed by western blot with 11553-1-AP (CHRN1 antibody) at dilution of 1:300 incubated at room temperature for 1.5 hours.



Immunohistochemical analysis of paraffin-embedded human colon cancer using 11553-1-AP (CHRN1 antibody) at dilution of 1:50 (under 10x lens).



IP Result of anti-CHRN1 (IP:11553-1-AP, 4ug; Detection:11553-1-AP 1:300) with mouse liver tissue lysate 4000ug.